

**COMMITTEE OF THE WHOLE MEETING AGENDA**

**Tuesday, May 27, 2025**

**Immediately following the Village Board Meeting, but not before 6:15 p.m.**

**Caledonia Village Hall - 5043 Chester Lane**

**Caledonia, WI 53402**

1. **Meeting called to order**
2. **Roll Call**
3. **Approval of Minutes:** Committee of the Whole – May 13, 2025
4. **Public Comment** - Provides a two-minute opportunity for citizens to voice opinions to the Committee of the Whole. The Committee of the Whole cannot respond as this may conflict with open meeting requirements.
5. **Committee Updates**
  - A. Plan Commission – Nancy Pierce
  - B. Parks and Recreation Advisory Committee – Holly McManus
  - C. Caledonia Utility District Commission – Lee Wishau
  - D. Visit Racine County – Fran Martin
  - E. Other Committees – Tom Weatherston
6. **New Business**
  - A. Solar Powered Street Light Pole Option – Crawford Park (*PRAC 4/8*)
  - B. Proposal for Donation and Integration of a Therapy Dog into Department Operations
  - C. Suggested items to be placed on a future meeting agenda (*with no action*)
7. **Adjournment**

**Committee of the Whole Meeting  
May 13, 2025**

**1 - Order**

President Weatherston called the Committee of the Whole meeting to order at 6:30 p.m. at the Caledonia Village Hall.

**2 – Roll Call**

**PRESENT:** 7 – President Weatherston, Trustee McManus, Trustee Wishau, Trustee Stillman, Trustee Martin, Trustee Lambrecht, and Trustee Pierce.

**EXCUSED:** 0

**STAFF:** Administrator Todd Willis, Village Attorney Tim Pruitt, Public Services Director Tony Bunkelman, Village Engineer Ryan Schmidt, Development Director Peter Wagner, Police Chief Chris Botsch, Deputy Clerk Norgie Metzinger, and Clerk Jennifer Bass

**3 – Approval of Minutes**

**A motion** was made by Trustee Lambrecht to approve the April 22, 2025 Committee of the Whole meeting, seconded by Trustee Stillman. **Motion carried 7-0.**

**4 – Public Comment**

The following people appeared to speak before the Committee:  
None

**5 – Committee Updates**

- A. Plan Commission – Nancy Pierce
- B. Parks and Recreation Advisory Committee – Holly McManus
- C. Caledonia Utility District Commission – Lee Wishau
- D. Visit Racine County – Fran Martin

**6 – New Business**

- A. Operator License – Robin Barth

**A motion** was made by Trustee McManus to recommend approval of the license, seconded by Trustee Pierce. **Motion carried 7-0.**

- B. Discussion and review of penalties for failing to complete construction projects

**A motion** was made by Trustee McManus to receive and file, seconded by Trustee Martin. **Motion carried 7-0.**

**A motion** was made by Trustee McManus to move agenda item 6F, Payne & Dolan Racine Quarry Explosives and Blasting Permit 2025, up next on the agenda, seconded by Trustee Pierce. **Motion carried 7-0.**

C. Payne & Dolan Racine Quarry Explosives and Blasting Permit 2025

**A motion** was made by Trustee Pierce to recommend approval to the Village Board, seconded by Trustee McManus. **Motion carried 7-0.**

D. Review of Emergency Meeting powers

**A motion** was made by Trustee McManus to receive and file, seconded by Trustee Stillman. **Motion carried 7-0.**

E. Discuss repeat offenders of nuisance animals and clarification on process with the Humane Society

**A motion** was made by Trustee Pierce to lay the item over until the Humane Society contract is renewed, seconded by Trustee McManus. **Motion carried 7-0.**

F. Review of Contract with Visit Racine County for Tourism

**A motion** was made by Trustee Pierce to recommend approval to the Village Board seconded by Trustee Martin. **Motion carried 7-0.**

G. Suggested items to be placed on a future meeting agenda (with no action)

1. A review of the financial viability of data centers for the Village and the energy utility impacts

**7 – Continuing Business**

A. Ordinance Review 9-1-57(b) and 9-4-6(b) (*CoW 4/8/2025, postponed to 5/13/25*)

Trustee Wishau left the meeting.

**A motion** was made by Trustee Martin to refer the item to the Utility District Commission, seconded by Trustee Pierce. **Motion carried 7-0.**

B. Review teleconference policy (*CoW 4/8/25, staff directed to review and make recommendations*)

**A motion** was made by Trustee Pierce to postponed to the next meeting, seconded by Trustee Martin. **Motion failed 3-3.**

**A motion** was made by Trustee Martin to direct the Village Administrator to update the policy and provide quotes on additional AV equipment for fiscal year 2026, seconded by Trustee Stillman. **Motion carried, 7-0.**

**8 – Adjournment**

President Weatherston adjourned the meeting at 7:53 p.m.

*Respectfully submitted:*

*Jennifer Bass*

*Village Clerk*

DRAFT



# MEMORANDUM

Date: April 28, 2025

To: Parks & Recreation Advisory Committee

From: Ryan Schmidt, P.E.  
Village Engineer



Re: **Solar Powered Street Light Pole Option – Crawford Park**

---

## BACKGROUND INFORMATION

The Parks Committee directed staff at its March 2025 meeting to further research the solar power lighting option for the Crawford Park Expansion Phase III project. The Village has traditionally refrained from the use of outdoor lighting in the park system. However, in the last few years of the development of the Master Park Plan, lighting has become a larger concern to ensure safety and extended use of the amenities that Crawford Park will provide. This report will summarize staff's research into solar lighting options compared to the traditional lighting done through We Energies.

Solar Street Light Pole options are a specialty item and more exclusive, especially to areas in the south. A recently installed solar powered street light pole was in the news last year in a neighboring community and was the first point of contact for information by Staff. That pole was manufactured by Fonroche Lighting out of Texas and Staff reached out to them for a quote and design information of their product. That information has been attached as an exhibit to this quote and an image is below for the light pole installed in 2024 in Cudahy.

The lighting pattern was selected to create the biggest impact with the least amount of infrastructure. While poles are typically located inside of courts and attempted to be placed on the sides of the court, the proposed court design and layout includes 3 poles for Pickleball placed inside the "alley" with two arms each and then 2 poles dedicated to the parking lot. The proposed lighting footprint provides coverage for a majority of the pickleball courts and lots and is guaranteed by the manufacturer to light all night for 8 years. This proposed layout also anticipates lighting being added in the future for Tennis or other amenities that will be added during the park expansion. So areas that may not have the most lighting coverage will eventually gain more lighting with future additions of lighting. The design is sleek and matches well with the proposed black epoxy coated chain link fence in the area.

The alternative option is to bring electricity to the site through We Energies and a separately bid project that lights the property more uniformly through standardized street light poles (that can be more decorative). This would include poles that are owned by We Energies but monthly billing is handled by the Village. The upfront cost of this would be similar to the cost

of the solar poles but there is an estimated cost of \$1,000 per year per pole in energy costs that have to be accounted for. However, long term strategies for lighting the park may be beneficial as power will need to be brought to the site for the overall goals of the park and it may be worth adding lighting that may service more than just the courts; i.e. baseball diamonds, ice rink, court sports, etc. These needs may require the level of service provided by We Energies while solar may be used for mor strategic locations of lighting needed in areas of isolated amenities from the “grid”.

**Ultimately, staff does support the idea of solar power and recommends that the Park Committee make a motion to utilize any budgetary savings for the Phase III project for the installation of 2 solar poles in the proposed parking lot as a pilot project. This case study can then be used to determine the future lighting needs of the park and its amenities as expansion continues.**



SOLAR STREET LIGHTING

# 365 NIGHTS OF GUARANTEED LIGHTING



**FONROCHE**  
lighting AMERICA

SOLAR IS THE NEW STANDARD



# SOLAR IS THE NEW STANDARD

## SOLAR LIGHTING, THE NEW STANDARD

At Fonroche Lighting, we are motivated by our desire to revolutionize street lighting around the world. As a pioneer in the market, we are convinced that solar energy is the best alternative to conventional grid street lighting. Together, we will overcome challenges and break the mold to accelerate the transition to a world of sustainable, efficient, economical and responsible lighting.

SOLAR IS THE NEW STANDARD

## WHY CHOOSE SOLAR LIGHTING?

FOR **365** NIGHTS OF...



### Savings

Quick and easy installation, no more electricity bills and no maintenance for ten years



### Autonomy

100% powered by solar energy, our solutions do not require connection to the grid



### Reliability

Resistant to even the most extreme weather conditions, including high winds and temperatures ranging from -40 °F to +158 °F



### Safety

Anti-blackout security system and vandalism protection



### Intelligence

Optimized energy storage and remote lighting control

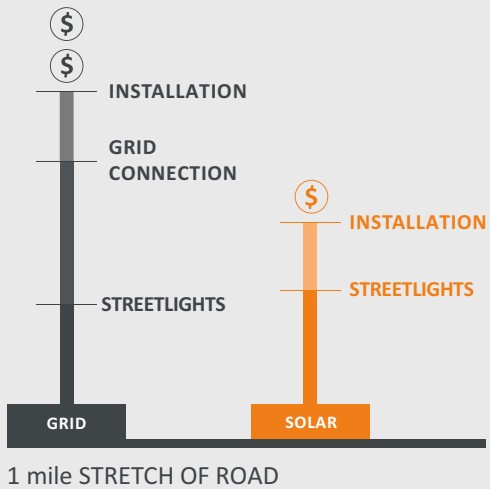


### Environmental Responsibility

With a carbon footprint 2 to 6 times lower than grid lighting

## Solar lighting, It's lower cost right from the initial investment!

Solar lighting eliminates the need for electrical grid repairs or construction costs thanks to its **cable-free, hook up free, and switchgear free operation**, representing significant savings. With solar lighting, savings are immediate: say goodbye to electricity bills for your outdoor lighting!





# POWER 365 SOLAR TECHNOLOGY

SOLAR LIGHTING technology BY FONROCHE

Consisting of a highly efficient photovoltaic panel, a smart storage system and the latest LED lighting, the Smartlight is the most powerful solar streetlight available on the market. The **Power 365 solar technology** developed by Fonroche Lighting guarantees a level of reliability and competitiveness that is unrivalled on the market thanks to our high-performance components and a project approach specific to each environment and approved by major transportation departments.



## FONROCHE Connect : Remote Communication Tool

- Remote monitoring and diagnosis
- Geolocation of each streetlight
- Remote monitoring of one or multiple streetlights simultaneously
- Long-range communication



## SUCCESSFULLY ACHIEVE YOUR SOLAR LIGHTING PROJECT GOALS

### THANKS TO OUR UNIQUE APPROACH

Each project is different. By taking into account the irradiance and weather conditions of each project, we can determine the right streetlight size and components to guarantee 365 nights of lighting.



#### 1 Identification of Project requirements



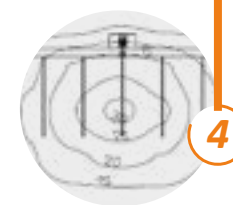
#### 2 Solar and Environmental Study

**COLLECTION** of weather data from the site  
**SIZING** and simulation of a typical year



#### 3 Custom Photometric Study

**RESULTS** 365 nights of guaranteed lighting per year  
**ADJUSTMENT** to create a project tailored to its location



#### 4 Precise Installation for an optimized budget



NEW HAMPSHIRE - Road



UTAH - Trail



FLORIDA - Parking lot

# WHY CHOOSE FONROCHE LIGHTING ?

World leader in solar street lighting



**For the reliability and robustness of our products,**  
proven in thousands of projects worldwide

**For our unique expertise**  
design, innovation, manufacturing, logistics, training, and more

**Because we are the only ones,**  
to guarantee you **365 nights of lighting per year**

## OUR EXPERTISE:



### The Power Room:

**THE LARGEST BATTERY TEST CENTER FOR SOLAR-POWERED LIGHTING**

5381 ft² dedicated to battery testing and validation, allowing for simulation of all climates to ensure the reliability, durability, and longevity of our systems.



### Who Are We?

Fonroche Lighting America is headquartered in Fort Worth, TX and operates satellite offices in Boise, Boston, Orlando, and Phoenix. The manufacturing and distribution site in Fort Worth is a 50,000 square foot facility with high bays, multiple loading docks, and outdoor storage. The current capacity is 400 solar streetlights per week.

Our global HQ is based in Southwest France and there we design and develop the technology behind our autonomous solar-powered streetlights to illuminate all types of infrastructure.

20  
YEARS OF  
EXPERIENCE

200  
EMPLOYEES

\$85 M  
SALES  
IN 2023

5  
SUBSIDIARIES  
THROUGHOUT  
THE WORLD

# YOUR AREA, YOUR STYLE, OUR AMBIENCES

With lines that blend functionality and elegance, the lights in our SMARTLIGHT range are designed as a complete package and come in a variety of distinctive styles. In addition to providing solar-powered lighting, Fonroche Lighting can also help you choose the ambience that best suits your environment, reflecting your desire to take an innovative approach to street lighting.

All our Smartlight luminaires comply with the darksky guidelines..



## NEW ART

Brilliant  
Contemporary  
Mineral



## BELLE EPOQUE

Refined  
Authentic  
Urban



## OPERA

Customizable  
Chic  
Modern



## ESSENTIAL

Sleek  
Timeless  
Design



# NEW ART

Stand Out  
With a Contemporary Style



# NEW ART

## BRILLIANT & MINERAL

Heavily influenced by nature and minerals, the design of the NEW ART lantern for solar-powered streetlights is inspired by diamonds, with their solidity and special relationship with light. The facets on top of the lantern give it a raw, carved-out appearance, but also a technological edge.



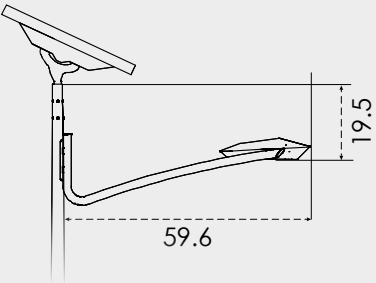
This light, with its fluid, lightweight design, will add a high tech feel to your roads, whether in rural or urban environments. NEW ART is ideal for those who want to stand out from the crowd and make an impact.



Applications:  
roads, streets, walkways, roundabouts, highways, etc.

## SPECIFICATIONS

Materials	Aluminium casting
LED modules	Interchangeable Modules- IP67 and IK09
Mounting Arm	Bolt-on mounting arm: Available in a single or twin version
Lighting efficiency	> 190 lm/W
Color temperature	2000K- 2200K- 2700K- 3000K- 4000K
Uplight	0%





# BELLE EPOQUE

Traditional  
With a Modern Twist



Elegance

Suspended

Tradition

# BELLE EPOQUE

## TRADITION & MODERNITY

Inspired by 'traditional' lighting, the BELLE EPOQUE lantern is a nod to days gone by. By turning this lantern upside down, we have brought it up to date, giving it a robust and solid appearance while retaining its refined, distinctive shape.



BELLE EPOQUE is a stylish street light that fits in perfectly with traditional urban and architectural spaces, such as town squares, plazas and roads. The shape of the mounting arm and the way in which the lantern is attached gives the impression that the light is suspended in mid-air, which lightens the overall structure.

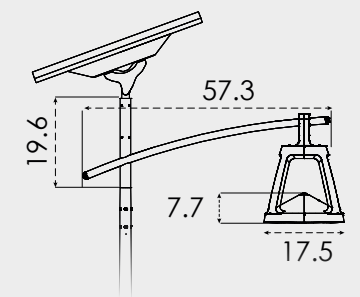
A collection of 4 color combinations specially designed by urban color designers. Ask for our exclusive color chart.



Applications:  
roads, town squares, parks and trails, etc.

## SPECIFICATIONS

Materials	Aluminium casting
LED modules	Interchangeable Modules- IP67 and IK09
Type of mounting arm	Oblong slip fit mounting arm: Available in a single or twin version
Lighting efficiency	> 190 lm/W
Color temperature	2000K- 2200K- 2700K- 3000K- 4000K
Uplight	0%
Customization	Colors (see color chart)
Equipment	Bird guard included





# OPERA

## Enhance Your Lighting With Decorative Features



# OPERA

## ORNAMENTATION & CUSTOMIZATION

OPERA brings a modern twist to traditional lighting features such as decorative ornamentation and arches.



Ornate and customizable, OPERA can be easily adapted to suit the specific character of each location. The low position of the LED modules ensures optimized, high-performance lighting. Ideal for urban environments, the OPERA lantern will:

- give residential areas more personality
- add a touch of modernity to urban streets
- enhance parking lots

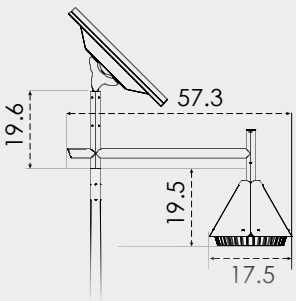
**A collection of 6 color combinations**  
specially designed by urban designers. Ask for our exclusive color chart.



**Applications:**  
trails, roads, parking lots, parks and walkways, etc.

## SPECIFICATIONS

Materials	Aluminium casting with decorative sheet metal
LED modules	Interchangeable Modules- IP67 and IK09
Type of mounting arm	Suspension-effect slip fit mounting arm: Available in a single or twin version
Lighting efficiency	> 190 lm/W
Color temperature	2000K- 2200K- 2700K- 3000K- 4000K
Uplight	0%
Customization	Colors (see color chart)





# ESSENTIAL

A Streamlined  
and Timeless Aesthetic



# ESSENTIAL

## MULTI-FUNCTIONAL

With its timeless design, the ESSENTIAL luminaire can be adapted to suit any project and any setting. This highly functional luminaire with its sleek, slender lines is designed to blend in with any environment.



Applications:  
roads, parking lots, housing developments, etc.

## SPECIFICATIONS

Materials	Galvanized steel- aluminium casting
LED modules	Interchangeable Modules- IP68 and IK09
Type of mounting arm	Galvanized steel slip fit mounting arm- Available in a single or twin version and with backlights
Lighting efficiency	> 190 lm/W
Color temperature	2000K- 2200K- 2700K- 3000K- 4000K
Uplight	0%
Customization	Colors





# SOLAR LIGHTING EVERYWHERE AND FOR EVERYONE



MOROCCO - Dar Bouazza Peninsula Park



URUGUAY - Paysandú Road



FRANCE - Calais Highway interchange

MORE INFORMATION AT  
[FonrocheSolarLighting.com](http://FonrocheSolarLighting.com)



Tel.: +1 339-225-4530

[Sales@Fonroche.us](mailto:Sales@Fonroche.us)

FONROCHE LIGHTING AMERICA

4900 David Strickland Rd. | Fort Worth, TX 76119



# APPLICATION DESIGN

## Lighting for Crawford Park Expansion Project Caledonia - WI



Jason Herz  
Regional Sales Manager  
P: (339) 225-4530 x227  
E: jason.herz@fonroche.us

**Brushy Creek - Cedar Park TX**

Project Number:	G8736
Date:	4/30/2025
Written by:	Cuong VU
Version :	A



# The global leader in solar lighting



Fonroche Lighting America is proud to be part of Fonroche Lighting, the global leader in off-grid solar street lighting. The deep resources and broader scope of an established market leader lets us take solar lighting even further, from the State Treasury in Salem, Oregon to the West African Republic of Senegal. Over 150,000 Fonroche SmartLight systems have been deployed worldwide.

With five offices in the USA and installations across the country, Fonroche is never far away. Some solution providers enter the solar lighting market—then move on. We're a reliable partner that sticks around. You get the responsive support and smart answers that you need now—and the confidence that we'll be here for you far in the future. And we can take on projects of any size, from local to national. That's why so many municipalities, military and federal facilities, tribes, commercial properties, and developers trust us to deliver the full promise of solar lighting.



Community Park – Centerville, UT

## The **3** key benefits for your project

### - OFF-GRID

100% solar, not connected to the utility grid. No outages.

**365 nights of light a year – guaranteed.**

### - POWERFUL

Powerful illumination, on a par with grid-connected systems.

### - COST-EFFICIENT

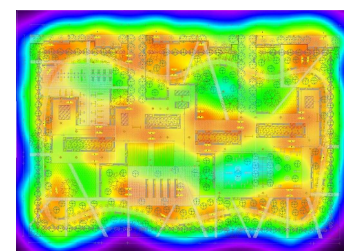
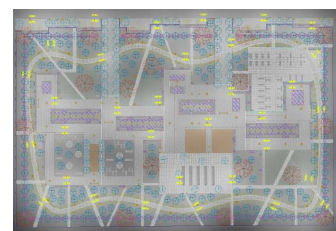
No maintenance for the first 10 years. Rapid installation. No operating costs.

## Feasibility of your solar lighting project

To guarantee powerful, cost-effective off-grid lighting, Fonroche operates its own **design offices**.

We assess the feasibility of each project in four stages:

1. First, we define your **lighting requirements**.
2. Next, we analyze the last 10 years of **local weather data** to determine how much energy our PV panels will generate.
3. On this basis, we **calculate** what size and how many products we need to install.
4. Finally, our sales team draws up a **cost estimate**.





## 1 Project = 1 Study



1



### 10-Year Analysis of local weather data

We use the **PVsyst** software suite and **Meteonorm** historical time series irradiation data to calculate the real-world operating conditions — orientation and tilt angle of the panel, shadow, etc. — and external parameters, such as direct and diffuse irradiation, temperature and the solar calendar.

2



### Simulation of product(s) over a typical year

Our teams have developed a solar sizing software application, which we use to determine which products will best meet your needs. We then simulate how these products operate over a typical year, based on the average conditions for **the last decade**.

3



### Sizing the project to your needs

We use a set of key criteria to optimally specify your project:

- Average battery charge level over the year
- Minimum charge level
- Comparative analysis of energy generated by the panel vs. energy used by the system
- Worst-case scenario (lowest irradiation, longest night)

4



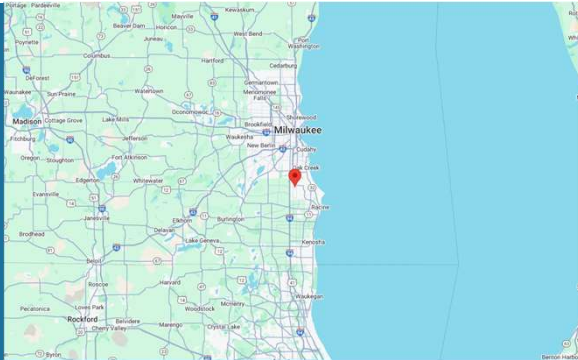
### Results

Based on our experience, we propose the **optimal solution** in terms of lighting **performance** and **cost effectiveness**.

Autonomy of  
**365**  
nights of lighting /year

# Analyzing your lighting project

## Your Project location



**Caledonia - WI**

**USA**

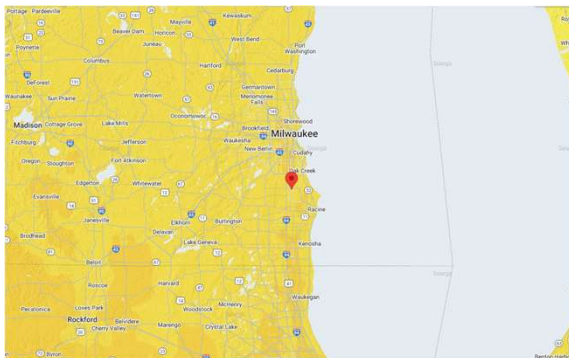
**GPS COORDINATES**

Latitude: 42.8078

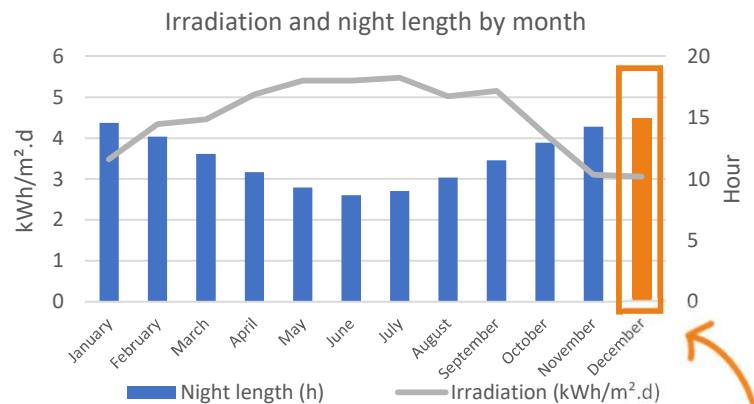
Longitude: -87.9242

## Your Solar Potential

We have analyzed the weather data for the last 10 years at your project location so that we can guarantee constant lighting every night of the year.



Average annual irradiation : 4.51 kWh/m<sup>2</sup>.d



*Sizing takes account of the month with the lowest irradiation and the longest night.*

## Your Lighting Application



Park

### Compliance with public lighting standards

Your project has been designed in compliance with:

- AASHTO standard



## SMARTLIGHT SYSTEM CONFIGURATION - Parking



Non pro-rated

### Project-Specific System Specifications

#### PHOTOVOLTAIC MODULE

PV panel power rating	310 Wp
PV panel tilt angle	45°



#### POWER 365: SMART STORAGE AND MANAGEMENT

Battery capacity (Must be NiMH)	936 Wh
------------------------------------	--------



#### LED LIGHT UNIT

Lighting power	50 W nominal
LED light unit specification	4000K - 180 Lm/w



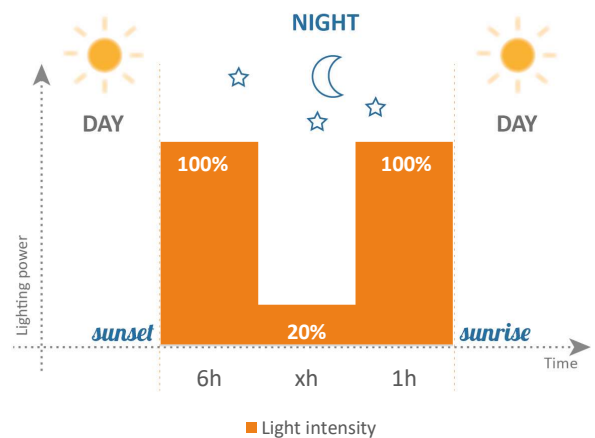
#### POLE & CROSSPIECE

Pole Height / Arm Length	20' / 4'
Base Type	Existing anchor base
Protective treatment	Powder Coated

**POWER 365**  
Ultimate Solar Lighting TECHNOLOGY BY FONROCHE



Chosen lighting profile for your project





## SMARTLIGHT SYSTEM CONFIGURATION – Pickleball courts



### Project-Specific System Specifications

#### PHOTOVOLTAIC MODULE

PV panel power rating	1x310 Wp
PV panel tilt angle	45°



#### POWER 365: SMART STORAGE AND MANAGEMENT

Battery capacity (Must be NiMH)	1x1248 Wh
------------------------------------	-----------



#### LED LIGHT UNIT

Lighting power	2x30 W nominal
LED light unit specification	4000K - 180 Lm/w



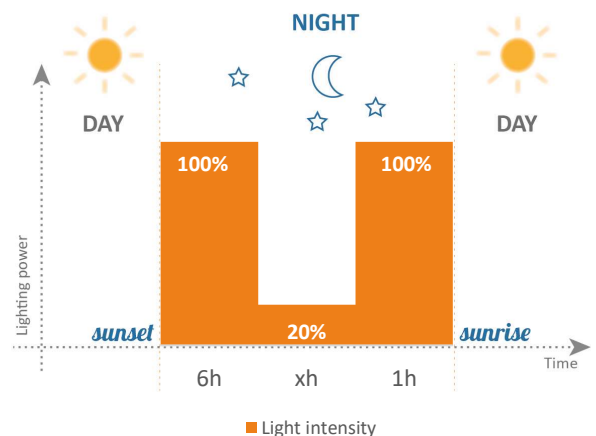
#### POLE & CROSSPIECE

Pole Height / Arm Length	20' / 4'
Base Type	Existing anchor base
Protective treatment	Powder Coated

**POWER 365**  
Ultimate Solar Lighting TECHNOLOGY BY FONROCHE



### Chosen lighting profile for your project



# Photometric survey results


Zone	Average lighting level (Fc)	Avg/Min Uniformity	Quantity T4 Single	Qty T4 Twin	Total quantity
Parking	0.75	3.75	2		2
Pickleball court (End/Middle)	0.90/1.46	2.25/2.43		3	3
TOTAL			2	3	5

Design Target: Poles placed at the existing locations.

## Eco-friendly lighting

***Choose Fonroche — and we will reduce your environmental footprint.***

*A standard streetlight consumes in average 80 W during 4200 h per year which represents  $0.08 \times 4200 \times$  number of solar streetlight = X kWh of energy saving.*



Once installed, solar lighting reduces  
**CO<sub>2</sub> emissions by 1kWh = 0.99 lbs CO<sub>2</sub>**  
compared to a grid-connected installation. (<https://www.eia.gov/>)



### Recycling our components

Long product service life and component recyclability are key aspects of Fonroche Lighting's environmental commitments. Our solar streetlights are over 90% recyclable.

Unlike lead-acid batteries, **NiMH batteries** do not contain any toxic chemicals. They are 98% recyclable — the nickel is extracted and used to make various materials, mostly stainless steel.

The **solar panels** have an extremely long service life. Even after 25 years, they will still be producing at least 80% of their initial peak power. So they can continue to be used. Alternatively, about 96% of their component materials can be recycled to make new panels.

# PHOTOMETRIC STUDY

---

*\*Note: these results are only valid if the Smartlight PV panel is at an azimuth angle of zero degrees and is completely free of shadow.*

*\*\*These results are subject to change due to technological or regulatory advances. This technical report is valid for 60 days from the date you receive it.*

# Lighting for Crawford Park Expansion Project

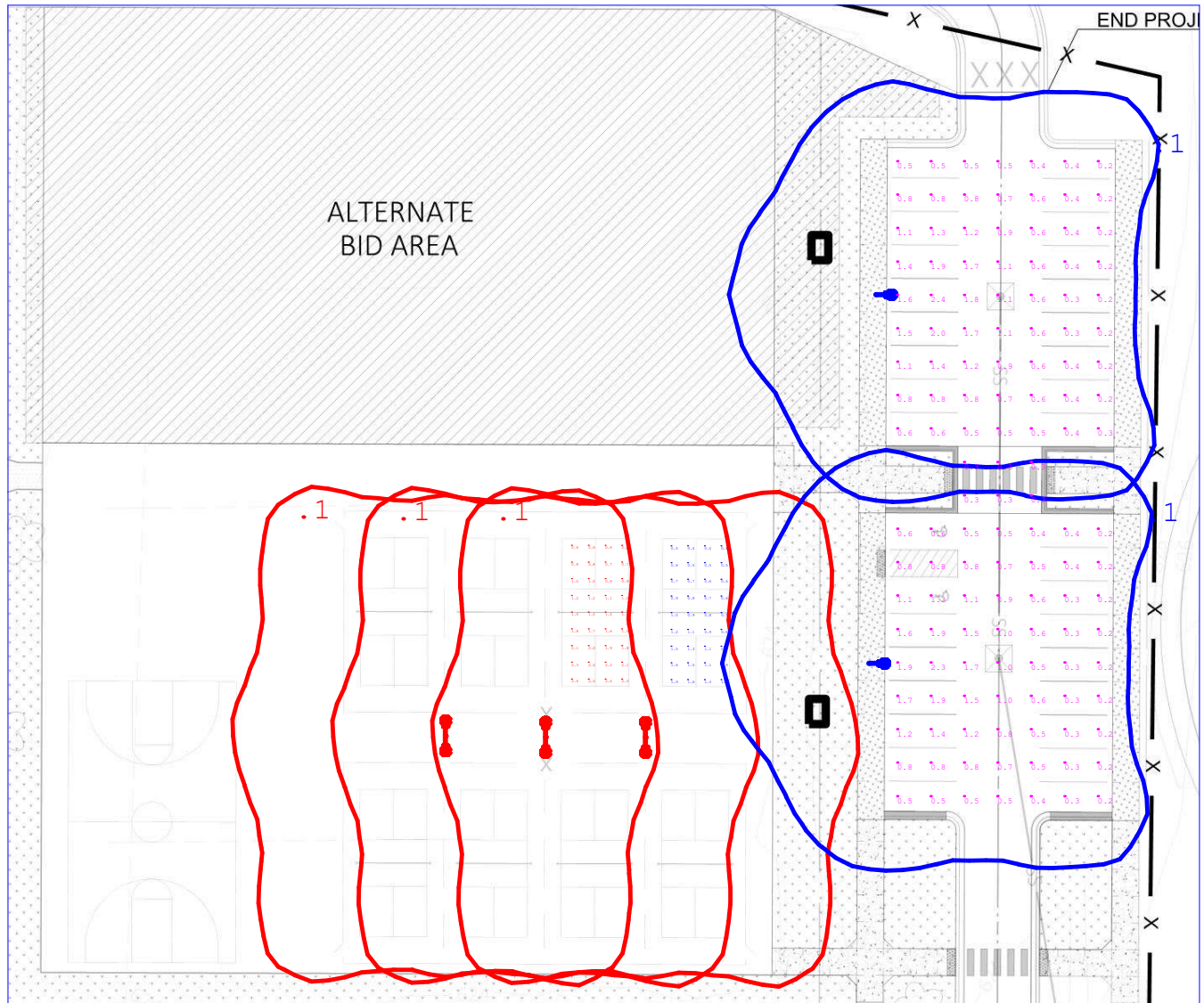


2224 SE Loop 820 Building C  
Fort Worth TX 76140  
Phone Number: (339) 225 4530  
www.fonrochesolarlighting.com

Lighting Plan Rev A

Project Number: G8736

By: Cuong Vu  
cuong.vu@fonroche.us  
Date: 4/30/2025



Luminaire Schedule					
Symbol	Label	Arrangement	Total Lamp Lumens	LLF	Qty
	T4-CK16B-4K-45W-20'CBP-3'Base	Single	8100	0.900	2
	T4-CK16B-4K-Twin-25W-20'CBP-3'base	BACK-BACK	4500	0.900	3

Calculation Summary							
Label	CalcType	Units	Avg	Max	Min	Avg/Min	Max/Min
Parking	Illuminance	Fc	0.75	2.4	0.2	3.75	12.00
Pickleball court- End	Illuminance	Fc	0.90	1.9	0.4	2.25	4.75
Pickleball court- Middle	Illuminance	Fc	1.46	2.6	0.6	2.43	4.33

## Lighting for Crawford Park Expansion Project

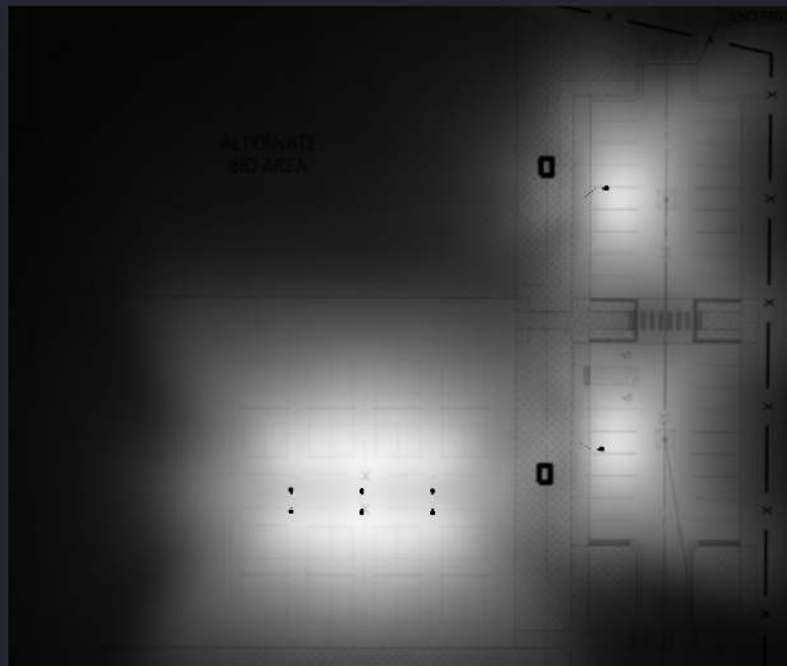


### Lighting Plan Rev A

Project Number: G8736

By: Cuong Vu  
cuong.vu@fonroche.us  
Date: 4/30/2025

2224 SE Loop 820 Building C  
Fort Worth TX 76140  
Phone Number: (339) 225 4530  
[www.fonrochesolarlighting.com](http://www.fonrochesolarlighting.com)



# Lighting for Crawford Park Expansion Project

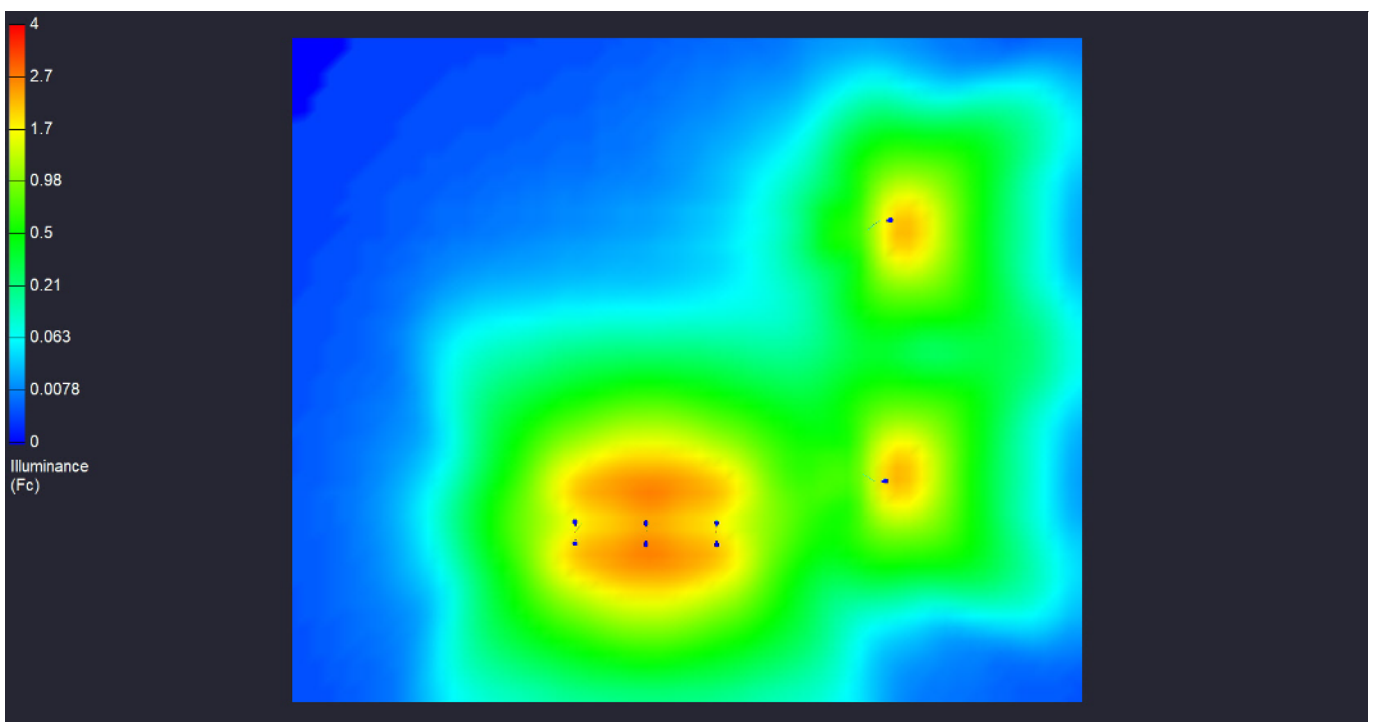


## Lighting Plan Rev A

Project Number: G8736

By: Cuong Vu  
cuong.vu@fonroche.us  
Date: 4/30/2025

2224 SE Loop 820 Building C  
Fort Worth TX 76140  
Phone Number: (339) 225 4530  
[www.fonrochesolarlighting.com](http://www.fonrochesolarlighting.com)





## A few examples





## Solar lighting

Your commitment to sustainability

### Contact us

**Anicet Mabonzo**

*Regional Sales Manager*

**P: (339) 225-4530 x210**

**E: a.mabonzo@fonroche.us**

FIND OUT MORE AT

**[www.FonrocheSolarLighting.com](http://www.FonrocheSolarLighting.com)**

FONROCHE LIGHTING AMERICA | 2224 SE Loop 820 Building C  
Fort Worth TX 76140  
**Telephone : 339-225-4530**



Opportunity Owner	Anicet Mabonzo	Quote Number	00085525
Payment Terms	50% deposit, 50% Net 30 from Ship Date-contingent on credit approval	Quote Name	G8736-Caledonia WI-Lighting for Crawford Park Expansion Projects-RevA
Shipping Terms	Prices are FOB Origin	Quote Date	4/30/2025
Notes to the customer	Fonroche Lighting America is only responsible for the structural integrity of the solar equipment provided. While we will work to support and provide calculations, Fonroche cannot be held responsible for the integrity of the existing foundations.	Quote Expiration Date	7/30/2025
		Est. Lead Time	Within 6 Weeks
		Ship To Name	Village of Caledonia WI
		Ship To	United States

Shipping estimated; final cost determined on day of shipping and added to invoice.

Beware of Fraud: Any advance payment request will only be made on the basis of a proforma invoice sent by Fonroche Lighting America.

Fonroche Model Number	Fonroche Product Description	Price System	Quantity	Amount
2[T54-CK16B-4K-T4] [P310F-4P]HW-MC Fixture Color: BK POLE: 20Ft. Round Tapered Pole-Anchor Base CBP-2-4FT Arm --Pole Color: BK	SmartLight Assembly with 1248Wh-24V NiMH Battery , special extreme temperature (from -40 °F to +158 °F), 310W solar module with Top of Pole assembly and Intelligent management/control system. Provisioned for Twin Fixture. Twin Essential (Formerly CK16B) Fixture 4K Color Temp.-Type 4 Fixture Color: BK - . Power Assembly color is black. Mount: High wind and enhanced marine coating. 20Ft. Round Tapered Pole-Anchor Base CBP-2-4FT Arm --Pole Color is BK 8 Year Warranty All Night Lighting 365 Days a Year - Full Battery Replacement Assumes No Shading   Tilt optimized for snow conditions  45 Degrees Tilt 100% =25 Watts worst case conditions.T-PM: 6 hrs. @100%   T-N (Balance of night) @20%   T-AM: 1 hrs. @100%	USD 5,671.00	3.00	USD 17,013.00
[T54-CK16B-4K-T4] [P310F-3P]HW-MC Fixture Color: BK POLE: 20Ft. Round Tapered Pole-Anchor Base CBP-1-4FT Arm --Pole Color: BK	SmartLight Assembly with 936Wh-24V NiMH Battery , special extreme temperature (from -40 °F to +158 °F), 310W solar module with Top of Pole assembly and Intelligent management/control system. Provisioned for Single Fixture configuration. Single Essential (Formerly CK16B) Fixture 4K Color Temp.-Type 4 Fixture Color: BK - . Power Assembly color is black. Mount: High wind and enhanced marine coating. 20Ft. Round Tapered Pole-Anchor Base CBP-1-4FT Arm --Pole Color is BK 8 Year Warranty All Night Lighting 365 Days a Year - Full Battery Replacement Assumes No Shading   Tilt optimized for snow conditions  45 Degrees Tilt 100% =45 Watts worst case conditions.T-PM: 6 hrs. @100%   T-N (Balance of night) @20%   T-AM: 1 hrs. @100%	USD 4,872.00	2.00	USD 9,744.00
PLRE2-4K	Solar Powered LED stud. 4lm-4000K Color Temperature	USD 388.00	15.00	USD 5,820.00

Total Line Items	USD 32,577.00
Shipping and Handling	USD 3,353.00
Quote Total	USD 35,930.00

This quotation is subject to the following terms and conditions

Seller's Terms and Conditions of Sale in effect on the date of this order shall apply to this quote and are hereby incorporated by reference. Seller's Terms and Conditions of Sale may be viewed at <https://www.fonrochesolarlighting.com/about-us/terms/>.

Pricing is based on Fonroche Lighting America's Standard Terms & Conditions and any additional terms stipulated herein. It is the Representative's responsibility to convey these terms to the customer. Without prior written approval from Fonroche Lighting America's Sales Director, any deviation from these terms may constitute a change in this pricing at the time of order. In the event that Fonroche Lighting America is unable recuparate difference in pricing from end customer, it may deduct the difference from representative's commission.

**VILLAGE OF CALEDONIA POLICE  
DEPARTMENT**

5045 Chester Lane  
Caledonia, WI 53402  
Administration/Public Records  
262-835-4423



**Chief of Police**  
Christopher Botsch

Dear Chief Christopher Botsch,

**Subject: Proposal for Donation and Integration of a Therapy Dog into Department Operations (05/20/2025)**

I am writing to propose the acquisition of a therapy dog to support the well-being of our officers, staff, and the community we serve. This initiative aligns with our department's commitment to fostering a healthy, resilient workforce and enhancing community engagement.

**Background and Rationale:**

Stress, trauma, and mental health challenges are prevalent among law enforcement personnel. Numerous studies have demonstrated that therapy dogs can significantly reduce stress levels, provide emotional support, and improve overall mental health. Additionally, therapy dogs can serve as valuable tools in community outreach, especially with vulnerable populations such as children, victims of trauma, and individuals with special needs.

**Proposal Details:**

- ☐ **Donation Source:** We are seeking a donation of a trained therapy dog from *Partners With Paws Service Dogs* based in Ixonia, WI. This organization has generously donated several service and therapy dogs within the southeastern Wisconsin area and has a proven track record of providing highly trained animals to support various communities.
- ☐ **Training and Certification:** The therapy dog would undergo specialized training and certification to ensure suitability for our department's environment. Importantly, *Partners With Paws Service Dogs* will donate the training and certification itself, meaning the only upfront cost to our department would be approximately \$1,500 for the supplies needed for therapy dog training, such as harnesses, toys, and other equipment.
- ☐ **Veterinary Support:** Currently, our department's K9 dog is sponsored for all veterinary bills by a local veterinary clinic. We hope to establish a similar sponsorship for the therapy dog to help offset ongoing veterinary expenses, ensuring the animal's health and well-being are maintained without additional financial burden on the department.
- ☐ **Roles and Responsibilities:** The therapy dog will assist officers during stressful incidents, serve as a calming presence in crisis situations, and participate in community outreach programs. Proper protocols will be established to maintain safety and professionalism.
- ☐ **Implementation and Oversight:** A designated team will oversee the therapy dog's integration, care, and ongoing training, ensuring compliance with all relevant policies and standards.

**Benefits:**

- ☐ Improved mental health and stress management for officers and staff
- ☐ Enhanced community relations and engagement
- ☐ Support for victims and vulnerable populations through therapeutic interactions
- ☐ Demonstration of our department's commitment to innovative, compassionate law enforcement

**Next Steps:**

I recommend we coordinate with *Partners With Paws Service Dogs* to facilitate the donation, evaluate suitable therapy dogs, and organize training and integration. I am happy to lead this effort and provide further details as needed. Thank you for your

**VILLAGE OF CALEDONIA POLICE  
DEPARTMENT**

5045 Chester Lane  
Caledonia, WI 53402  
Administration/Public Records  
262-835-4423



**Chief of Police**  
Christopher Botsch

consideration of this initiative. I believe that a therapy dog would be a valuable addition to our department, promoting wellness and community trust. I look forward to discussing this proposal further.

Thank you,

Lieutenant Erin Laehr