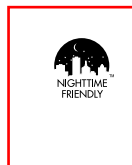




# MR1 LED LED Area Luminaire



## Specifications

<b>EPA:</b>	0.54 ft <sup>2</sup> (0.05 m <sup>2</sup> )
<b>Length:</b>	24-1/2" (62.2 cm)
<b>Width:</b>	18-5/8" (47.3 cm)
<b>Height:</b>	6-3/8" (16.2 cm)
<b>Weight (max):</b>	31 lbs (14.7 kg)



Catalog Number

Notes

Type

Hit the Tab key or mouse over the page to see all interactive elements.

## A+ Capable Luminaire

This item is an A+ capable luminaire, which has been designed and tested to provide consistent color appearance and system-level interoperability.

- All configurations of this luminaire meet the Acuity Brands' specification for chromatic consistency
- This luminaire is A+ Certified when ordered with DTL® controls marked by a **shaded background**. DTL DLL equipped luminaires meet the A+ specification for luminaire to photocontrol interoperability<sup>1</sup>
- This luminaire is part of an A+ Certified solution for ROAM®2 or XPoint™ Wireless control networks, providing out-of-the-box control compatibility with simple commissioning, when ordered with drivers and control options marked by a **shaded background**<sup>1</sup>

To learn more about A+, visit [www.acuitybrands.com/aplus](http://www.acuitybrands.com/aplus).

1. See ordering tree for details.
2. A+ Certified Solutions for ROAM require the order of one ROAM node per luminaire. Sold Separately: [Link to Roam](#); [Link to DTL DLL](#)



A+ Capable options indicated by this color background.

## Ordering Information

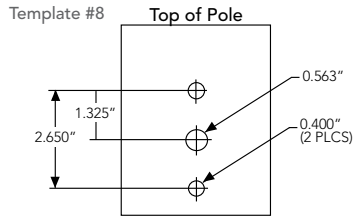
**EXAMPLE: MR1 LED 42C 700 40K SR5 MVOLT SPA DDBXD**

MR1 LED		Drive Current		Color temperature		Distribution				Voltage			Mounting	
Series	LEDs													
MR1 LED	42C 42 LEDs (one engine)	350	350mA	30K	3000K	SR2	Type II	SR4	Type IV	MVOLT <sup>1</sup>	240 <sup>1</sup>	480	SPA	Square pole mounting
		530	530mA	40K	4000K	SR3	Type III	SR5	Type V	120 <sup>1</sup>	277 <sup>1</sup>		RPA	Round pole mounting
		700	700mA	50K	5000K					208 <sup>1</sup>	347		WBA	Wall bracket
Control Options										Other Options			Finish (required)	
<b>Shipped installed</b>										<b>Shipped separately<sup>6</sup></b>				
PER	NEMA twist-lock receptacle only (no controls)			PNMTDD3	Part night, dim till dawn <sup>5</sup>		VG	Vandal guard		SF	Single fuse (120, 277, 347V) <sup>1</sup>		DDBXD	Dark bronze
PER5	Five-wire receptacle only (no controls) <sup>2</sup>			PNMT5D3	Part night, dim 5 hrs <sup>5</sup>				DF	Double fuse (208, 240, 480V) <sup>1</sup>		DBLXD	Black	
PER7	Seven-wire receptacle only (no controls) <sup>2</sup>			PNMT6D3	Part night, dim 6 hrs <sup>5</sup>				DFL	Diffusing lens		DNAXD	Natural aluminum	
DMG	0-10v dimming wires pulled outside fixture (for use with an external control, ordered separately) <sup>3</sup>			PNMT7D3	Part night, dim 7 hrs <sup>5</sup>							DWHXD	White	
BL30	Bi-level switched dimming, 30% <sup>4,5</sup>											DDBTXD	Textured dark bronze	
BL50	Bi-level switched dimming, 50% <sup>4,5</sup>											DBLBXD	Textured black	
												DNATXD	Textured natural aluminum	
												DWHGXD	Textured white	



## Ordering Information

### Drilling



### Accessories

Ordered and shipped separately.

DLL127F 1.5 JU	Photocell - SSL twist-lock (120-277V) <sup>7</sup>
DLL347F 1.5 CUL JU	Photocell - SSL twist-lock (347V) <sup>7</sup>
DLL480F 1.5 CUL JU	Photocell - SSL twist-lock (480V) <sup>7</sup>
DSHORT SBK U	Shorting cap <sup>7</sup>
MR1VG U	Vandal guard accessory
KMA8 DDBXD U	Mast arm adapter
SPA19/AS DDBXD U	Square pole DM19 to DM19AS adapter
RPA19/AS DDBXD U	Round pole DM19 to DM19AS adapter

For more control options, visit [DTL](#) and [ROAM](#) online.

Omero™ shares a unique drilling pattern with the AERIS™ family. Specify this drilling pattern when specifying poles, per the table below.

<b>DM19AS</b>	Single unit	<b>DM29AS</b>	2 at 90°
<b>DM28AS</b>	2 at 180°	<b>DM39AS</b>	3 at 90°
<b>DM49AS</b>	4 at 90°	<b>DM32AS</b>	3 at 120° *

**Example:** SSA 20 4C DM19AS DDBXD

Visit [Lithonia Lighting's POLES CENTRAL](#) to see our wide selection of poles, accessories and educational tools.

### Tenon Mounting Slipfitter \*

Tenon O.D.	Single Unit	2 at 180°	2 at 90°	3 at 120°	3 at 90°	4 at 90°
2-3/8"	AST20-190	AST20-280	AST20-290	AST20-320	AST20-390	AST20-490
2-7/8"	AST25-190	AST25-280	AST25-290	AST25-320	AST25-390	AST25-490
4"	AST35-190	AST35-280	AST35-290	AST35-320	AST35-390	AST35-490

\*For round pole mounting (RPA) only.

### NOTES

- MVOLT driver operates on any line voltage from 120-277V (50/60 Hz). Single fuse (SF) requires 120 or 277 voltage option. Double fuse (DF) requires 208 or 240 voltage option.
- If ROAM® node required, it must be ordered and shipped as a separate line item from Acuity Brands Controls.
- Not available with 347 or 480V.
- Requires an additional switched line.
- Dimming driver standard. Not available with 347V, 480V, PER5 or PER7.
- Also available as a separate accessory; see Accessories information at left.
- Requires luminaire to be specified with PER option. Ordered and shipped as a separate line item.

## Performance Data

### Lumen Output

Lumen values are from photometric tests performed in accordance with IESNA LM-79-08. Data is considered to be representative of the configurations shown, within the tolerances allowed by Lighting Facts. Contact factory for performance data on any configurations not shown here.

LEDs	Drive Current (mA)	System Watts	Dist. Type	40 K (4000 K, 70 CRI)				
				Lumens	B	U	G	LPW
42C (42 LEDs)	350	49W	SR2	5,128	1	0	1	105
			SR3	5,109	1	0	1	104
			SR4	5,075	1	0	1	104
			SR5	5,403	3	0	1	110
	530	75W	SR2	7,148	2	0	2	95
			SR3	7,121	1	0	2	95
			SR4	7,074	1	0	2	94
			SR5	7,531	3	0	2	100
	700	98W	SR2	8,564	2	0	2	87
			SR3	8,533	2	0	2	87
			SR4	8,476	2	0	2	86
			SR5	9,023	3	0	2	92

### Lumen Ambient Temperature (LAT) Multipliers

Use these factors to determine relative lumen output for average ambient temperatures from 0-40°C (32-104°F).

Ambient	Lumen Multiplier
0°C	1.06
10°C	1.03
20°C	1.01
<b>25°C</b>	<b>1.00</b>
30°C	0.99
40°C	0.96

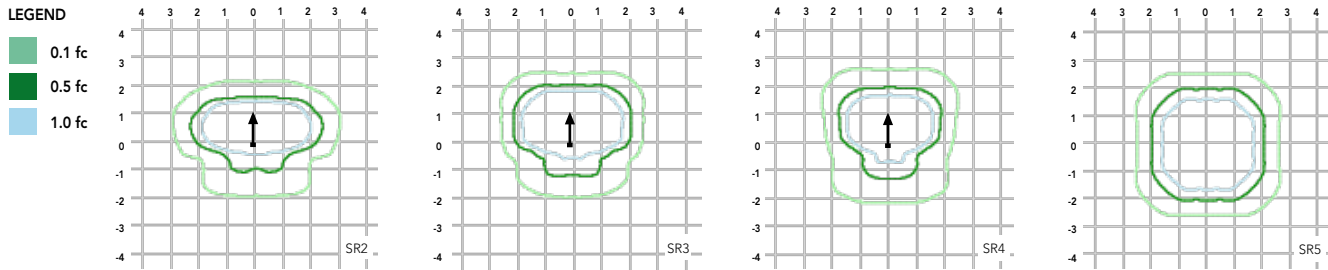
### Projected LED Lumen Maintenance

Data references the extrapolated performance projections for the **MR1 LED 42C 700** platform in a **25°C ambient**, based on 10,000 hours of LED testing (tested per IESNA LM-80-08 and projected per IESNA TM-21-11).

To calculate LLF, use the lumen maintenance factor that corresponds to the desired number of operating hours below. For other lumen maintenance values, contact factory.

Operating Hours	0	25,000	50,000	100,000
Lumen Maintenance Factor	1.0	0.96	0.93	0.85

Isofootcandle plots are considered to be representative of available optical distributions.



## FEATURES & SPECIFICATIONS

### INTENDED USE

Ideal for parking areas, street lighting, walkways and car lots.

### CONSTRUCTION

Single-piece die-cast aluminum housing with nominal wall thickness of .012". Die-cast doorframe has impact-resistant, tempered glass lens (3/16" thick). Doorframe is fully gasketed with one-piece tubular silicone.

### FINISH

Exterior parts are protected by a zinc-infused Super Durable TGIC thermoset powder coat finish that provides superior resistance to corrosion and weathering. A tightly controlled multi-stage process ensures a minimum 3 mils thickness for a finish that can withstand extreme climate changes without cracking or peeling. Standard Super Durable colors include dark bronze, black, natural aluminum and white. Available in textured and non-textured finishes.

### OPTICS

Precision acrylic refractive optics for optimum light distribution through the flat glass lens. Light engines are available in standard 4000K or optional 3000K or 5000K (70 CRI) configurations.

### ELECTRICAL

Light engine consists of 42 high-efficacy LEDs mounted to a metal-core circuit board and aluminum heat sink, ensuring optimal thermal management and long life. Class 1 electronic driver has a power factor >90%, THD <20%, and has an expected life of 100,000 hours with <1% failure rate. Easily-serviceable surge protection device meets a minimum Category C Low operation (per ANSI/IEEE C62.41.2).

### INSTALLATION

Included mounting block and integral arm facilitate quick and easy installation. Stainless steel bolts fasten the mounting block securely to poles and walls. The MR1 LED utilizes the AERIS™ series pole drilling pattern.

### LISTINGS

CSA certified to U.S. and Canadian standards. IP65 rated. **U.S. Patent No. D556,357.**

### WARRANTY

5-year limited warranty. Complete warranty terms located at: [www.acuitybrands.com/CustomerResources/Terms\\_and\\_conditions.aspx](http://www.acuitybrands.com/CustomerResources/Terms_and_conditions.aspx).

**Note:** Actual performance may differ as a result of end-user environment and application. All values are design or typical values, measured under laboratory conditions at 25 °C. Specifications subject to change without notice.