

Neighbor Informational Meeting



October 24th, 2019

Payne & Dolan, Inc.

Welcome



- Review of Development Project
- Charles Street Relocation
- General Quarry Development Plan
- Vibra-Tech Presentation
- Future Project Schedule

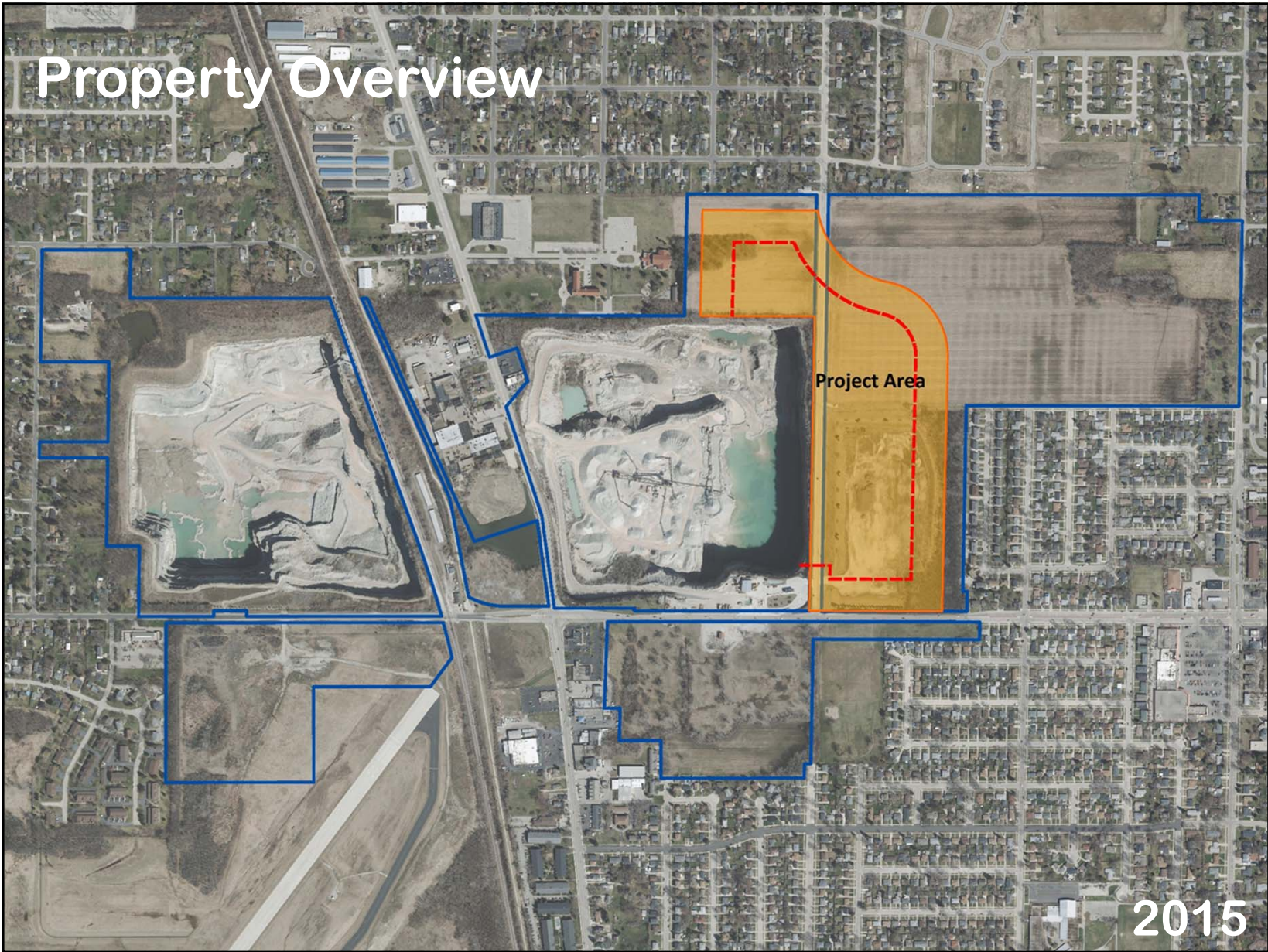
Who is Payne & Dolan



Payne & Dolan is a 3rd generation, family owned company that has served the needs of their customers for over 85 years. We provide professional construction and engineering services in addition to producing quality construction materials.

Customers rely on us to deliver cost effective expert solutions to their construction needs. While we are often associated with state, municipal and federal projects, many of our customers are local businesses in need of changing or improving their current infrastructure.





Development Project Overview

1. Relocation of Charles Street
2. Bike Path
3. Landscaped operations berm
4. Screening berm
5. Improve 50' vegetated buffer
6. Overburden removal
7. Limestone extraction
8. Processing and stockpiling
9. Sales and trucking
10. Deed restriction



Charles Street Reconstruction



March 2019



September 2019



October 2018

September 2019

Charles Street Reconstruction

Brush & Debris Removal



Charles Street Reconstruction

Utility Relocation – Gas Main



Charles Street Reconstruction

Utility Relocation - Water Main



Charles Street Reconstruction

Utility Relocation – Storm Sewer



Charles Street Reconstruction

Utility Relocation – Electric, Cable, Fiber Optic



Charles Street Reconstruction

Grading & Aggregate Base





July 1, 2019

September 25, 2019

Charles Street Reconstruction

Concrete Paving



Charles Street Reconstruction

Concrete Paving



Charles Street Reconstruction

October 24, 2019



Charles Street Reconstruction

Three Mile Paving



July 2019



September 2019

Charles Street Reconstruction

Headlight Screening Berm & Landscaping



Charles Street Reconstruction

Headlight Screening Berm & Landscaping



Deed Restriction



- ✓ Recorded with Racine County Register of Deeds

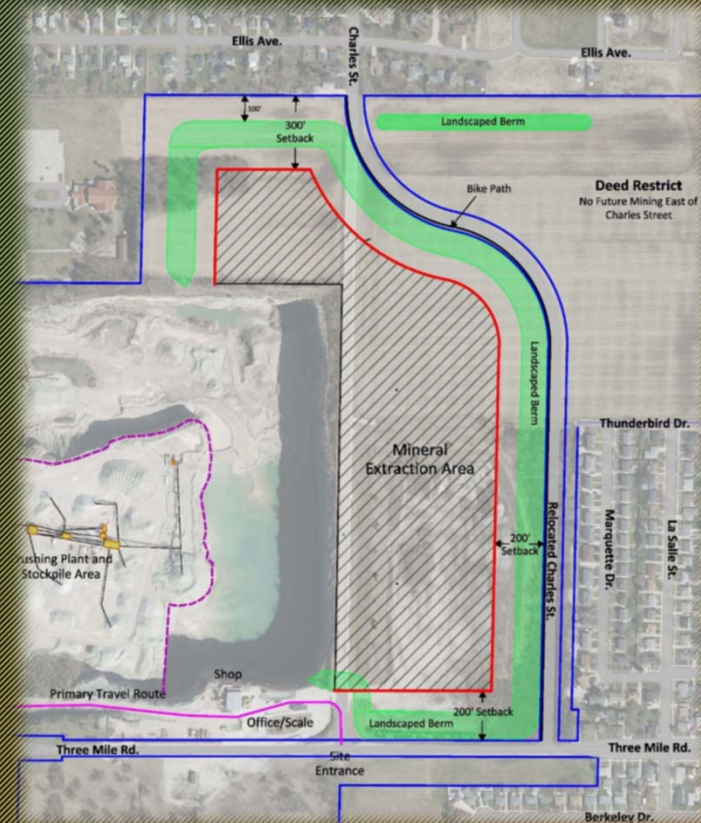
“The Restricted Area described on Exhibit B shall not be used for future mining-related activity, business park uses or industrial uses.....The intent of this Declaration is to ensure that future uses after implementation of the reclamation plan are compatible with residential and recreational uses.....”



Operations Development Plan



1. Building of Perimeter Berm
2. Landscaping of Berm
3. Fencing of Property
4. Removal of Overburden
5. Extraction of Rock
6. Processing and Stockpiling
7. Sales and Trucking



Perimeter Berm



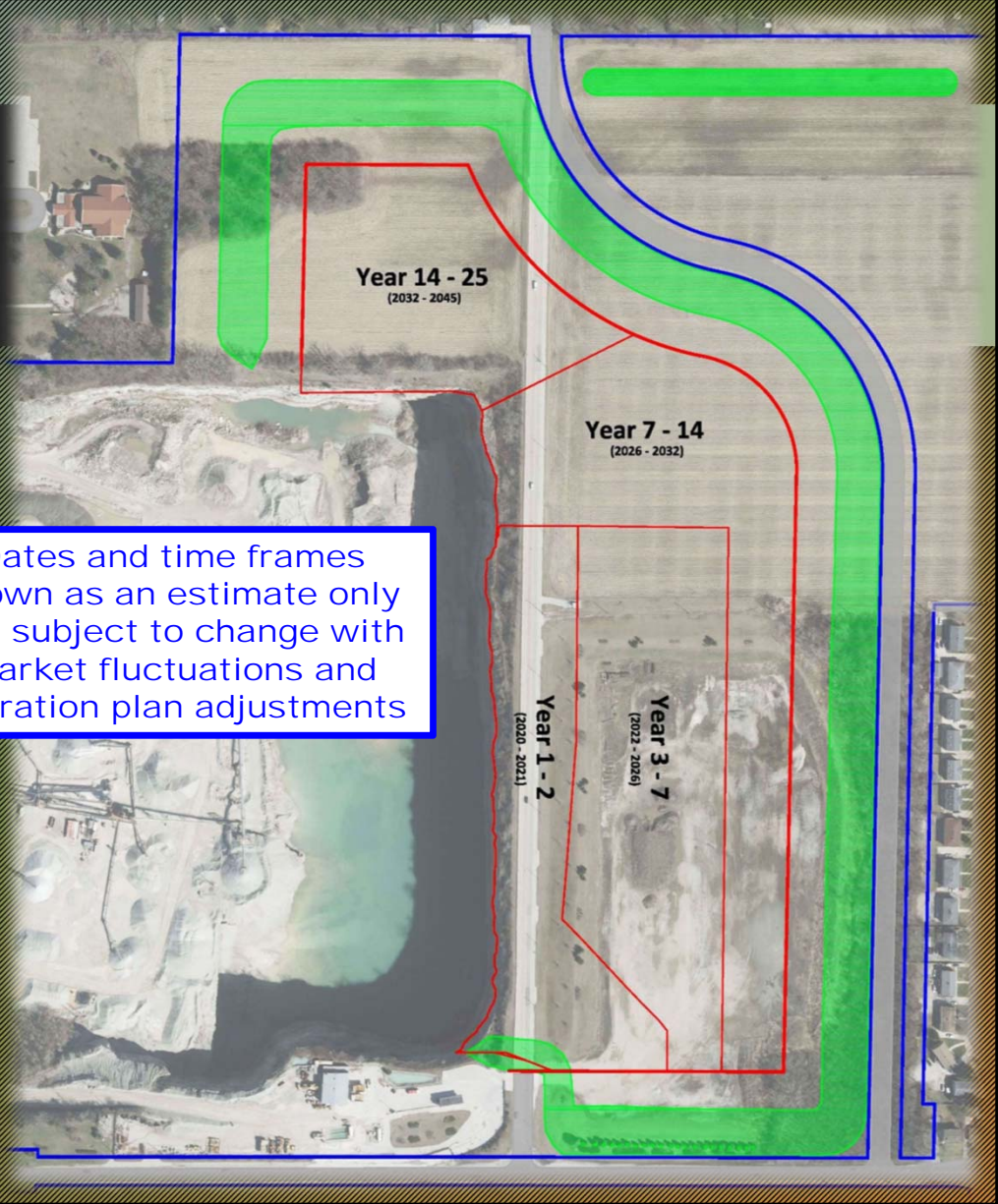
Video of Quarry Operations

Racine Quarry Operations

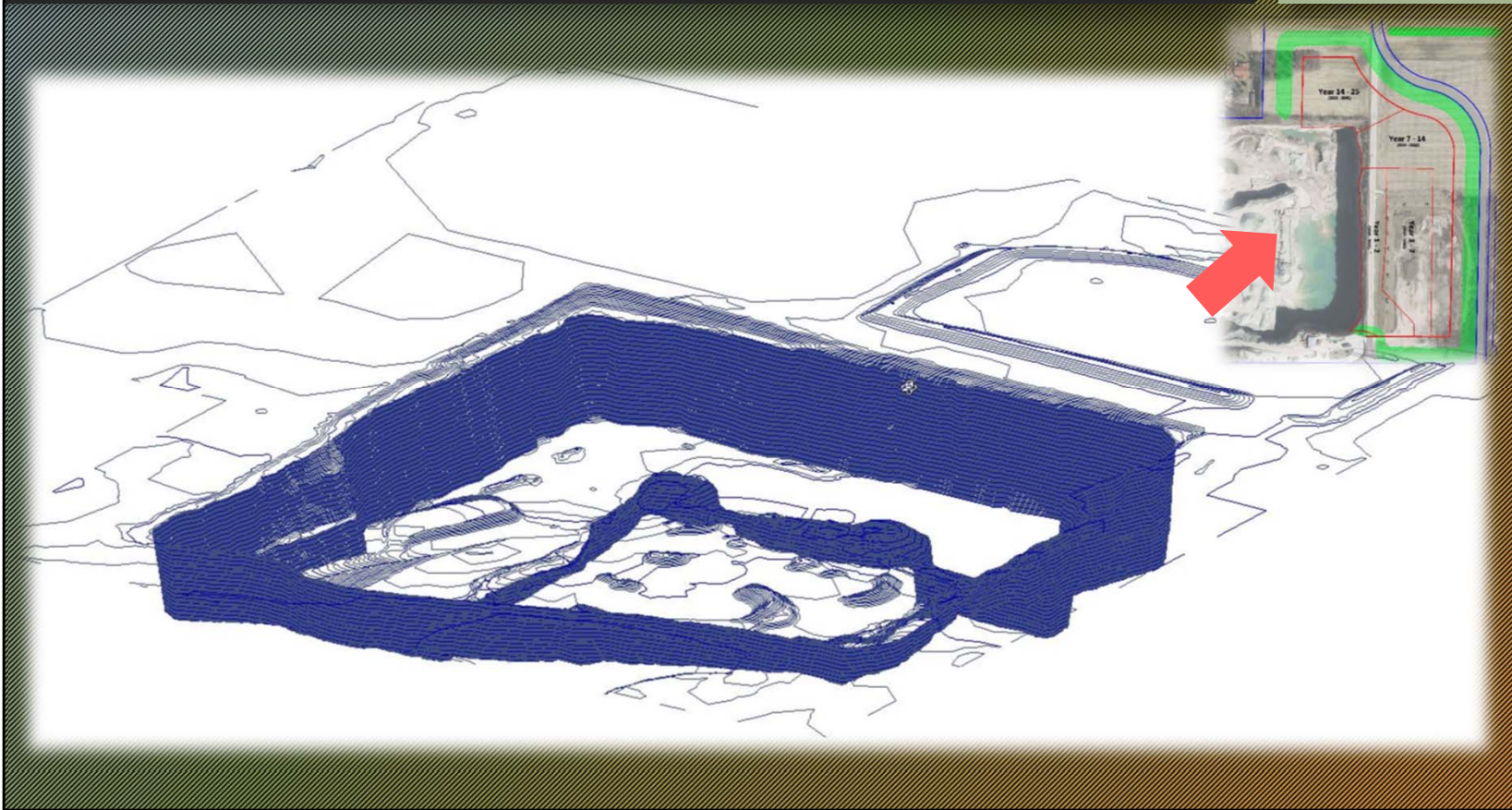


General Extraction Progression

Dates and time frames shown as an estimate only and subject to change with market fluctuations and operation plan adjustments



Existing Conditions



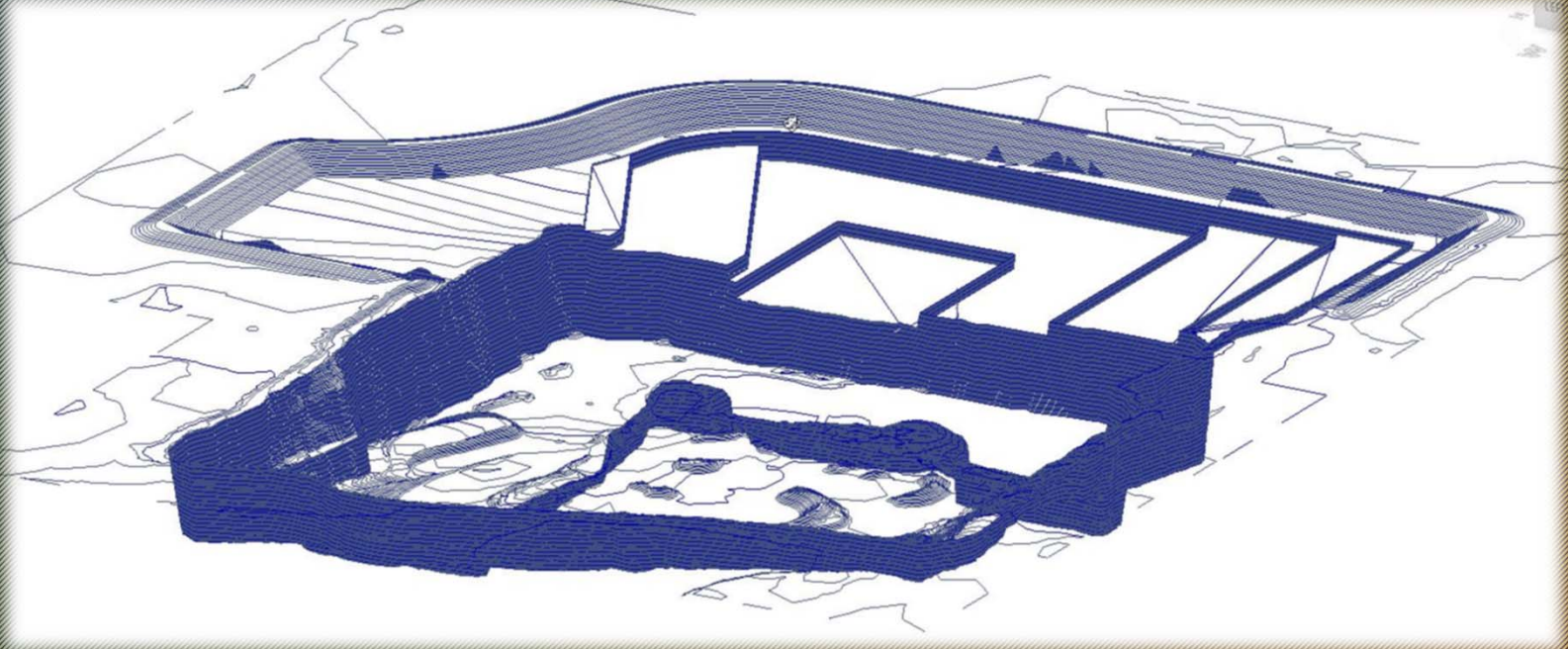
Years 1-2

Dates and time frames shown as an estimate only and subject to change with market fluctuations and operation plan adjustments



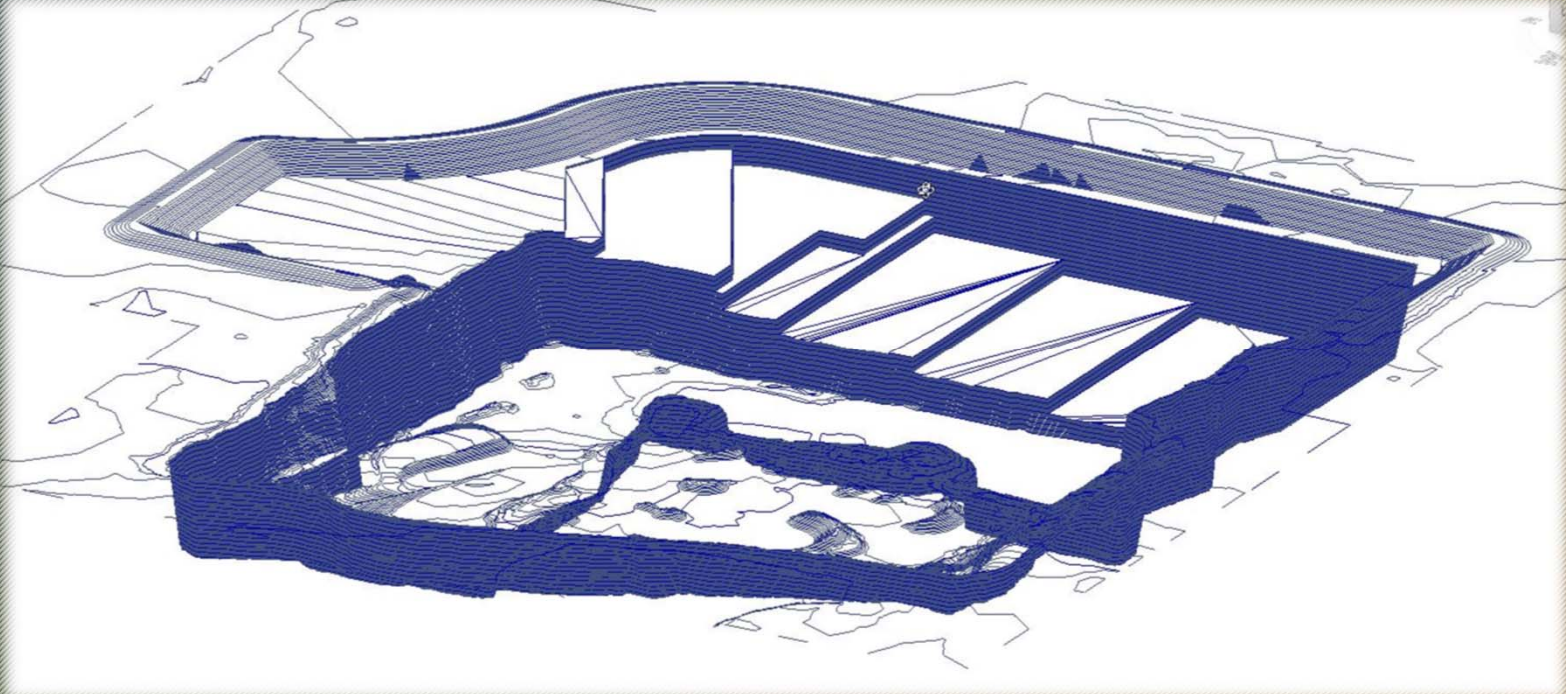
Years 2-7

Dates and time frames shown as an estimate only and subject to change with market fluctuations and operation plan adjustments



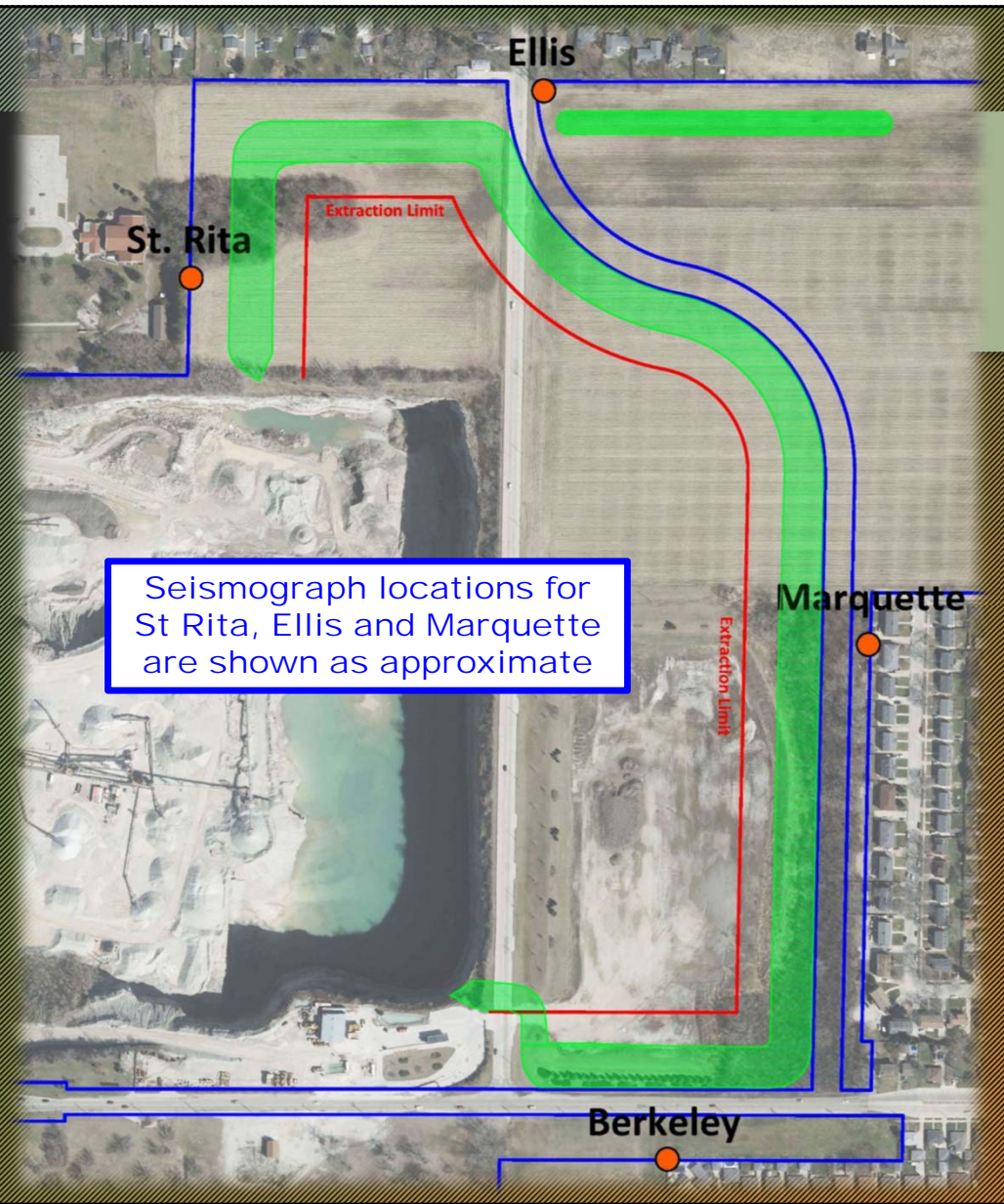
Years 7-13

Dates and time frames shown as an estimate only and subject to change with market fluctuations and operation plan adjustments



Limestone Extraction

- Blasting is necessary to loosen the limestone
- Blasting is heavily regulated by Federal, State and Local blasting rules including the Village's Explosives and Blasting Ordinance
- Customized drill and blasting program
- Licensed personnel
- All blasts monitored for compliance



Vibra-Tech, Inc.



- Mike Spors, E.I.T.

PreBlast Notifications



For those who want to know:

- A message sent to you via text or email
- Informs you that blasting will occur that day



This is a preblast notification from Payne & Dolan. There will be blasting at the Racine Quarry today.

Interested?

- Please sign-up after the meeting

Upcoming Schedule



- Fall/Winter 2019 – 2020
 - Completion of Charles Street
 - Construct Perimeter Landscape Berm
 - Fence Project Perimeter
 - Move Overburden
- Spring 2020
 - Landscape Perimeter Berm
 - Begin Extraction of Limestone in New Area
 - Install New sign and Landscaping at Site Entrance
- Summer 2020
 - Quarry Tours
 - Paving Haul Road inside Quarry
 - Relocate Wheel Wash

Questions / Comments?



Contact:

Clint Weninger, *Land Resources Manager & Geologist*

Phone: 262-524-1258

Email: cweninger@payneanddolan.com