

**RESOLUTION NO. 2025-039  
VILLAGE OF CALEDONIA**

**A RESOLUTION APPROVING A BUDGET AMENDMENT TO REALLOCATE  
PREVIOUSLY APPROVED CAPITAL FUNDS FROM A TRACTOR TO A SWING  
COUPLER AND GRAPPLE BUCKET**

The Village Board for the Village of Caledonia, Racine County, WI do resolve as follows:

**WHEREAS**, the Department of Public Works was approved for \$150,000 for a new tractor mower in the 2025 Budget Capital Fund; and

**WHEREAS**, the final cost of the Tractor came in lower and resulted in a cost savings to the Department of Public Works; and

**WHEREAS**, the DPW went before the Committee of the Whole to request that the cost savings be utilized to purchase a swing coupler for the rubber-tired excavator and grapple bucket for the skid steer; and

**WHEREAS**, on April 22, 2025, the Committee of the Whole recommended approval of the reallocation of funds to purchase the coupler and bucket for the Department of Public Works as described in the Village Engineer's Memo dated April 16, 2025, and attached hereto as **Exhibit A**; and

**NOW THEREFORE, BE IT RESOLVED THAT**, that the Village Board authorizes the amendment of the 2025 budget for reallocating capital funds as described in the Village Engineer's Memo in **Exhibit A** and shown in the fiscal note included as **Exhibit B**.

Adopted by the Board of Trustees of the Village of Caledonia, Racine County, Wisconsin, this 13 day of May, 2025.

**VILLAGE OF CALEDONIA**

By: Thomas Weatherston  
Thomas Weatherston  
Village President

Attest: Jennifer Bass  
Jennifer Bass  
Village Clerk

# MEMORANDUM

Date: April 16, 2025

To: Committee of the Whole  
Village Board

From: Ryan Schmidt, P.E.  
Village Engineer



Re: 2025 Budget Modification – Swinger Coupler and Skid Steer Grapple Bucket

---

## BACKGROUND INFORMATION

The Village of Caledonia Public Works Department Budgeted \$150,000 for a new tractor mower in 2024 for the 2025 Budget for Capital Funds. At that time, quotes we received justified that value but when the actual tractor was ordered with John Deere, the final cost was \$115,570.32. This leads to cost savings of \$34,429.68. DPW Staff began to investigate a way to utilize this funding based on actual needs from the crews in the field. It was determined that 2 primary things needed to be replaced or acquired to better suit our crews in the field: A Swinger Coupler with Grading Bucket and a Skeleton Grapple Bucket for the Track Skid Steer.

The Swinger Coupler specification and quote is attached hereto as Exhibit A. This allows the wheeled excavator the ability to articulate the bucket for ditching practices a total of 90° (45° in each direction). DPW crews do a lot of ditch work during the construction season and this would replace our current unit completely that has lived its useful life. The total cost of this product with a grading bucket is \$23,100. The only other quote that was provided back to staff was for over \$29,000. Staff recommends approval of the funds to be used for this item.

The Skeleton Grapple Bucket quote and product sheet are attached hereto as Exhibit B. The grapple bucket allows our DPW crews to perform tree clearing, brush maintenance, and other related tasks more efficiently through the ability to grapple large volumes of brush material. Our Skid Steer is a universal tool that can utilize a variety of attachments like a Swiss-Army knife and this will assist with those activities. The total cost is \$4,900. Three quotes were received and this one is the cheapest. Staff recommends approval of the fund balance to be used for this item as well.

Each of these items will better serve an existing piece of equipment that is not directly related to the tractor and is being recommended for approval. Total funds requested are \$28,000 out of the savings of \$34,429.68 for the DPW equipment.

## RECOMMENDATION

**Move to recommend approval of a budget amendment for the use of remaining Capital Funds - Highway Equipment from a Tractor Mower to purchase a Swinger Coupler with Bucket and Skeleton Grapple Bucket.**



# Proposal

QUOTE NUMBER |

PREPARED FOR  
VILLAGE OF CALEDONIA



April 4, 2025

VILLAGE OF CALEDONIA  
6922 NICHOLSON RD  
CALEDONIA, WISCONSIN, 53108

We are pleased to offer you the following proposal for your consideration.

One (1) Wain Roy Attachment tilt pin grabber coupler Work Tool with all standard equipment in addition to the specifications listed below:

**STOCK NUMBER:** NIS  
**SERIAL NUMBER:** NIS  
**YEAR:** 2025  
**SMU:** 0

Thank you for your interest in Fabick Cat and Caterpillar products. Please know that we sincerely appreciate your consideration and look forward to answering any questions you may have moving forward. Feel free to contact me directly at any time.

Sincerely,

Nicholas Lovrine  
Machine Sales Representative  
Fabick Cat  
nicholas.lovrine@fabickcat.com  
(262) 613-2673

This quotation is valid for 30 days, after which time we reserve the right to re-quote.



### **MACHINE CONFIGURATION**


Wain Roy swinger with Hydraulic Pin Grabber	\$16,800
60" CF Woods Ditching and Grading Bucket	\$6,300

### **PRICING INFORMATION**

PRICE AS EQUIPPED	\$23,100.00
-------------------	-------------

PRICE ABOVE INCLUDED INSTALL



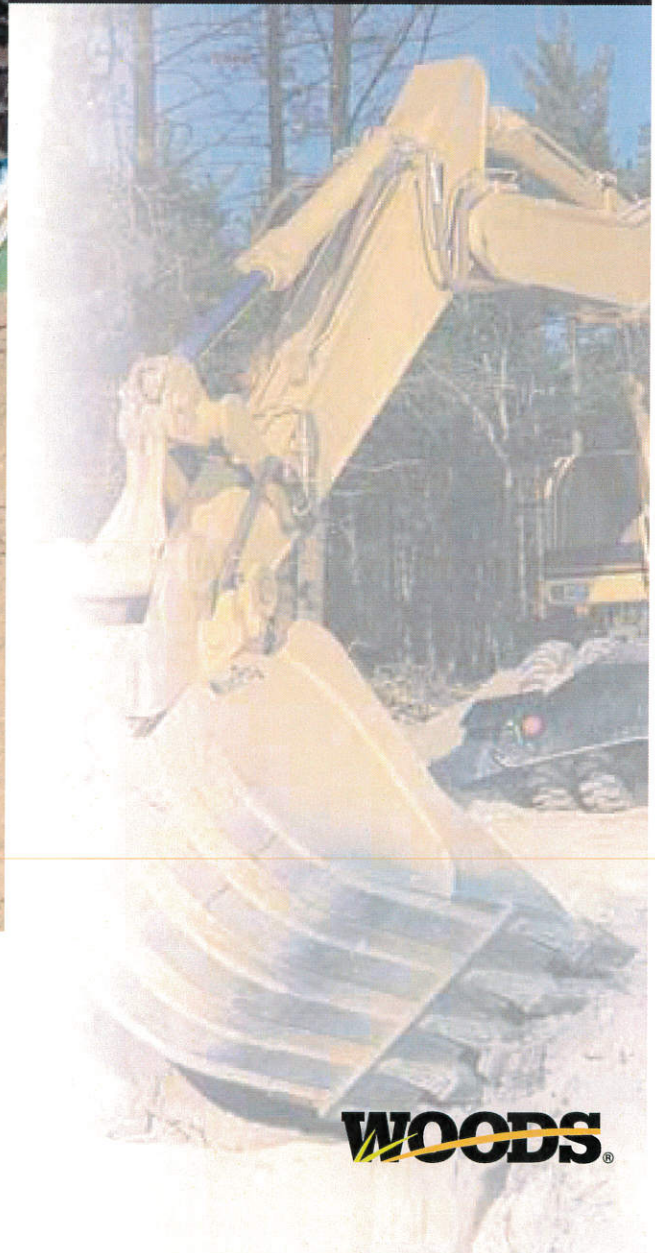


# WAIN ROY® SWINGER® COUPLER SYSTEM

featuring

**SERIES 2XLS**  
WAIN ROY EXTENDED LIFE SYSTEM

HYDRAULIC  
SIDE ANGLE COUPLER  
SYSTEM







## OVERVIEW- SIDE ANGLE COUPLER

The hydraulically-rotated side angle coupler is designed to maximize the tool handling capability of tracked and rubber tired excavators and standard and extendible-stick tractor-loader-backhoes while retaining the efficient mounting characteristics of rigid style quick change coupler systems.

The side angle coupler allows the attachment to be maneuvered laterally up to a total of 90° providing a greater degree of flexibility, precision, and control over a number of applications and conditions. Even in the most common tasks the increased maneuverability of the attachment can extend productivity and efficiency by requiring that the machine be repositioned less frequently.

The side angle coupler accepts a variety of common attachments including ditching, grading, v-ditching, trenching and Jaw® buckets. In addition it accepts grapples, hydraulic breakers, vibratory compactors and single point rippers for use in a wide range of construction, excavation and demolition applications.

### Ditching, grading and trenching.

The side angle coupler is especially well suited to applications on a berm or an embankment as well as ditching, grading, or trenching operations requiring angling or digging underneath fixed objects as in laid pipe or underground tanks.

### Demolition and clearing.

A side angle coupler allows accurate maneuvering of hydraulic breakers to break up small material. Also, with Jaw® or grapple attachments, easily separate excess soil from tree roots or separation of concrete from rebar prior to disposal.

### Landscaping.

With a side angle coupler the bucket can be tilted to more evenly pour and distribute material. Utilize this coupler system with a grapple or Jaw® bucket, to precisely place plantings and rocks.



Recognized as the industry leader in rigid quick change coupler systems, the Wain Roy® brand is renowned for innovation and reliability. The Wain Roy Swinger® side angle coupler is no different, designed to provide the same rugged level of service, the same innovative technology and the same time saving benefits as our rigid system in a horizontally articulated side angle coupler.

### Series 2XLS technology.

Groundbreaking and revolutionary, the Wain Roy Swinger coupler system utilizes Series 2XLS technology, a patented fulcrum plate design that significantly reduces the destructive free-play between coupler and attachment and allows precise refitting with simple hand tools.

### Efficient.

A quick change coupler, the Swinger system allows for the easy attachment of a variety of productive tools to your machine in minutes, making multiple accessory changeovers a simple task.

### Universal.

Each of our versatile quick attach tools is designed to smoothly fit up with any brand or model machine equipped with a Wain Roy Swinger.



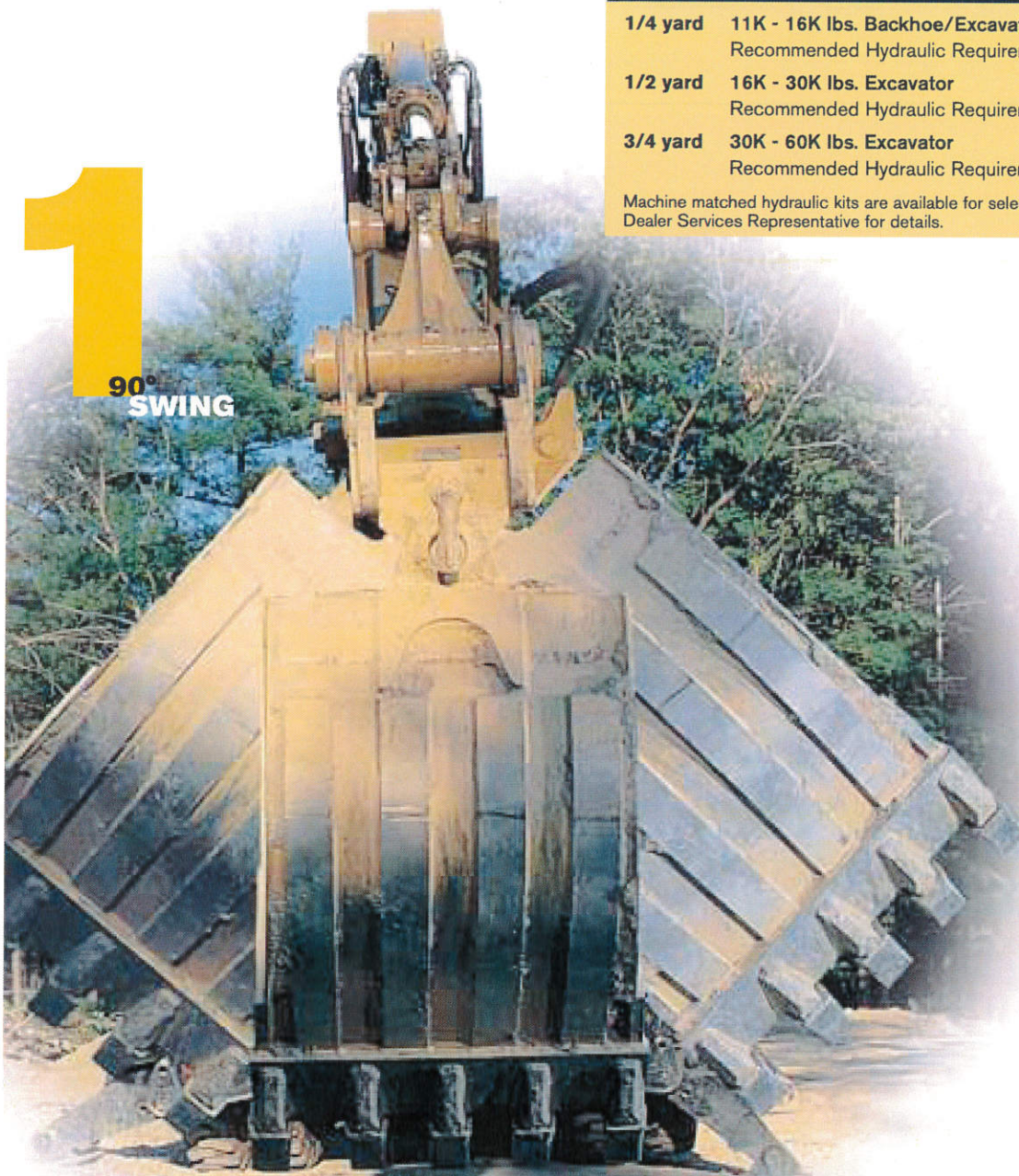
# specifications

<b>1/4 yard</b>	<b>11K - 16K lbs. Backhoe/Excavator</b>	225 - 275 coupler lbs.
	Recommended Hydraulic Requirements	10 - 15 GPM, 3,500 PSI max
<b>1/2 yard</b>	<b>16K - 30K lbs. Excavator</b>	400 - 500 coupler lbs.
	Recommended Hydraulic Requirements	10 - 15 GPM, 3,500 PSI max
<b>3/4 yard</b>	<b>30K - 60K lbs. Excavator</b>	800 - 1,000 coupler lbs.
	Recommended Hydraulic Requirements	10 - 15 GPM, 3,500 PSI max

Machine matched hydraulic kits are available for select models, please contact your Woods Dealer Services Representative for details.

# 1

90°  
SWING



DITCHING  
BUCKET



RIPPER  
BUCKET



GRAPPLE



BUCKET  
JAW®



COMPACTOR



## features

## WAIN ROY SWINGER® COUPLER SYSTEM applications & attachments

**1** The Swinger allows an operator to rotate the attachment up to a total of 90° for greater control and flexibility across many common applications.

**2** All Wain Roy brand couplers are designed to make multiple tool changeovers quick and easy.

**3** A short tip radius design allows for significant digging forces.

**4** The exclusive design features stationary external hose connections which eliminate binding or pinching. The hydraulic cylinder is positioned to minimize movement and provide protection from debris and is uncomplicated in design for easy maintenance.

**5** While the new Series 2XLS style hook is up to 40% stronger than prior designs, it is engineered to continue to fit older model attachments.

Use in landscape and golf course maintenance for effective operation on berms, hills and embankments. Use in utility contracting to dig underneath laid pipes. Use to excavate foundations and swimming pools, clean canals, or finish grade. The Swinger coupled with a **Wain Roy ditching**, grading, hi-cap, trenching or **Ripper Bucket®** is a highly versatile combination.

Angle the bucket and use the corner to break up frozen or compacted ground. When pouring material, angle the bucket to achieve finer placement and more even distribution.

Pull stumps and shake off excess dirt, clear roads, separate rebar from concrete, or precisely place stones, pipe, or plantings with the Swinger coupler and a **Wain Roy Jaw®** bucket or **hydraulic grapple**.

A Gannon® brand **vibratory driver/compactor** and Swinger coupler combination facilitates positioning of compactor in trench compaction and post driving applications.



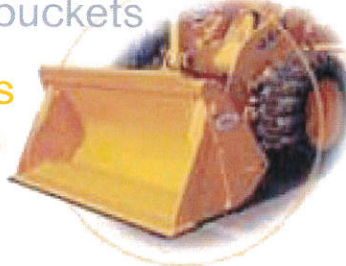
# WOODS CONSTRUCTION EQUIPMENT

Tools for productivity



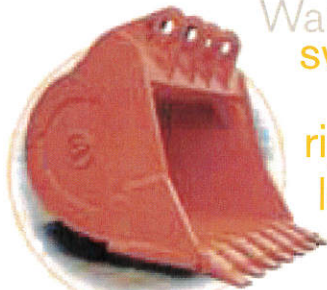
Woods® multi-purpose  
loader buckets

hydraulic  
couplers  
compactors



Gannon® industrial  
box scrapers

jaw grapple



Wain-Roy® quick change  
swinger couplers

buckets  
ripper buckets  
loader backhoe  
buckets



skid steer

CF® excavator buckets

mining buckets  
attachments  
landscape tools  
backhoes  
cold planers



Alitec® vibratory rollers

stump grinder

WoodsCare™  
genuine  
repair parts



## Woods Equipment Company

151 Suffolk Lane  
Gardner, Massachusetts 01440

800-848-3447 tel  
978-632-6808 fax  
[www.woodsonline.com](http://www.woodsonline.com)

# WOODS®

We manufacture a world of tools to make you more productive.

WoodsConstruction™ supplies buckets, coupler systems, and other attachments for construction applications.

WoodsAgricultural™ offers tractor-powered productivity tools for cutting, shredding, and specialty agricultural applications.

WoodsLandscape™ provides tractor and self-powered tools for mowing, landscaping, and general grounds care.

WoodsCare™ provides parts and services for the total ongoing care of your Woods equipment.

WoodsTisco™ supplies a comprehensive line of aftermarket replacement parts and accessories.

For more information: 1-800-848-3447

WARNING! Some illustrations may show safety shields removed to provide a better view. Equipment should never be operated with any safety shielding removed. Some machines in this catalog may be with optional equipment. Always operate machines in accordance with supplied operating manuals. Specifications are subject to change without notice. Woods, Wain-Roy, Gannon, Swinger, JAW, and Ripper Bucket are registered trademarks of Woods Equipment Company. ©1999 Woods Equipment Company. All rights reserved. F-9991-GL (Rep. 10/05)



# WOODS

## CONSTRUCTION EQUIPMENT



### CENTRAL FABRICATORS

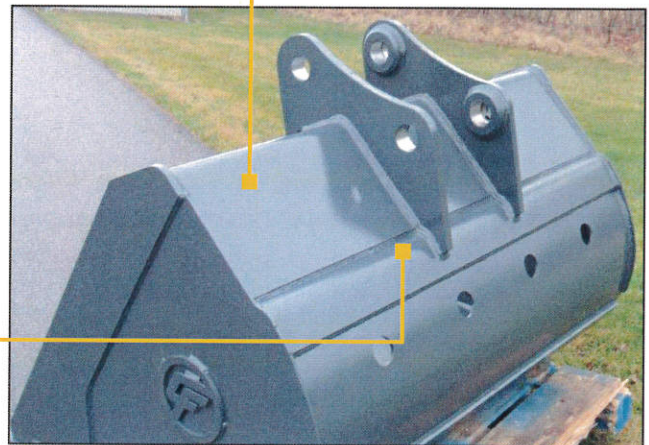
## DITCHING AND GRADING BUCKETS

#### SETTING NEW STANDARDS

- Available in two capacities – standard and high
- T1 steel lip design
- Standard bolt on edge kit included
- Center gusset plate available on some models

#### 1 | DEEPER BRIDGE

Deeper bridge section provides additional strength and rigidity



#### 2 | EARS

Ears are welded to double thickness of bridge / Moldboard



#### 3 | NEW BRIDGE DESIGN

The new bridge design provides clear and un-obstructed material flow when filling and dumping the bucket



#### 4 | DRAINAGE HOLES OPTION

Moldboard or Side Plates



#### 5 | MOLDBOARD

Moldboard extends to protect side plate weld



Printed in the USA

**Woods Equipment** A Blount International Company  
1962 Queenland Drive, Mosinee, WI 54455 tel 800-848-3447 woodsequipment.com

Warning! Some images may show safety shields removed to provide a better view. Equipment should never be operated with any safety shield removed. Some machines in this brochure may be shown with optional equipment. Always operate machines in accordance with supplied operator's manuals. ©2013 Woods Equipment Company. All rights reserved. WOODS, the Woods logo, Central Fabricators, and CF logo are trademarks of Woods Equipment Company. All other trademarks, trade names, or service marks not owned by Woods Equipment Company that appear in this brochure are the property of their respective companies or mark holders. Specifications subject to change without notice. Revised March 2013

**WOODS**  
Woods Equipment Company





Corporate Office:  
W250 N6851 Hwy 164  
P.O. Box 904  
Sussex, WI 53089

Sussex, WI DeForest, WI De Pere, WI Negaunee, MI  
1-800-242-3115 1-800-585-7219 1-800-638-7448 1-800-562-9770  
Eau Claire, WI Marathon, WI Rockford, IL  
1-800-585-7232 1-888-886-4410 1-800-585-7231

Distributors of Equipment and Supplies for ■ Construction ■ Forestry ■ Industry ■ Government

TO: VILLAGE OF CALEDONIA

DATE: JANUARY 14TH, 2025

REFERENCE: MBR GRAPPLE BUCKET

WE SUBMIT THE FOLLOWING PROPOSAL:

QUANTITY	DESCRIPTION	AMOUNT
1	VIRNIG 78" V50 SKELETON GRAPPLE BUCKET 36.1"	
	SALE PRICE.....	\$4,900.00

TERMS: NET DUE UPON RECEIPT  
DELIVERY: SUBJECT TO PRIOR SALE

F.O.B.: SUSSEX, WISCONSIN

WE THANK YOU FOR THE OPPORTUNITY TO QUOTE ON THIS EQUIPMENT

Miller-Bradford & Risberg, Inc.

SIGNED

JAMESON SADOWSKE

V40 SKELETON  
GRAPPLE

Available widths 66", 72" & 84"

Open-sided design for hauling  
brush, logs, and debris.



Shown  
with optional  
cylinder guards



OPTION:  
CYLINDER GUARDS

35.2" JAW OPENING	~8.5" TINE SPACING	< 2400 LB LOADER OPERATING CAP.
-------------------------	--------------------------	---------------------------------------

- 1. EVERY TINE IS MADE FROM ONE PIECE OF STEEL FOR MAXIMUM RIGIDITY
- 2. NITROSTEEL® CYLINDER RODS & TEFLON® COATED BUSHINGS ON HINGES

Known clearance issue on John Deere® 330G, 331G, 332G and 333G.

	MODEL BSGV66	BSGV72	BSGV84
Overall Width (in.)	67.5	73.5	85.5
Height: Overall / Bucket (in.)	26.5 / 20.3		
Overall Depth (in.)	36.9		
Number of Tines (w/ sides)	8	9	10
Space Between Tines (in.)	8.9	8.5	8.9
Tine Thickness (in.)	0.5¹		
Cylinder Bore / Stroke (in.)	2.0 / 8.375		
Cylinder Pins / Hinge Pins Dia. (in.)	1.25 / 1.25		
Grapple Jaw Opening (in.)	35.2		
Approximate Weight (in.)	780	815	860
Recommended Loader Capacity	Less than 2400 lbs		

¹ Material is Grade 50 Plate (50,000 PSI Minimum Yield Strength).

V50 SKELETON  
GRAPPLE

Available widths  
60", 66", 72", 78", 84" & 90"

One of the most popular  
and versatile Virnig grapples.  
Handles brush, logs, and debris.



0.5" GRADE 80 STEEL TINES	36.1" JAW OPENING	5.5" TINE SPACING	> 1500 LB LOADER OPERATING CAP.
------------------------------	-------------------------	-------------------------	---------------------------------------

- 1. EVERY TINE IS MADE FROM ONE PIECE OF STEEL FOR MAXIMUM RIGIDITY
- 2. NITROSTEEL® CYLINDER RODS & TEFLON® COATED BUSHINGS ON ALL PIVOTS
- 3. STANDARD WITH CYLINDER GUARDS

	MODEL SGV60	SGV66	SGV72	SGV78	SGV84	SGV90
Overall Width (in.)	61.5	67.5	73.5	79.5	85.5	91.5
Height: Overall/Bucket (in.)	27.8 / 21.3					
Overall Depth (in.)	39.9					
Number of Tines (w/ sides)	11	12	13	14	15	16
Space Between Tines (in.)	5.5					
Tine Thickness (in.)	0.5¹					
Cylinder Bore / Stroke (in.)	2.0 / 8.375					
Cylinder Pins / Hinge Pins Dia. (in.)	1.25 / 1.563					
Grapple Jaw Opening (in.)	36.1					
Approx. Weight (lbs)	815	850	885	920	955	990
Recommended Loader Capacity	Greater than 1500 lbs					

¹ Material is Grade 80 Plate (80,000 PSI Minimum Yield Strength).