

RESOLUTION NO. 2021-88

**RESOLUTION OF THE VILLAGE BOARD OF THE VILLAGE OF CALEDONIA
TO APPROVE A SIGN PLAN FOR THE DEVELOPMENT LOCATED 4542 DOUGLAS
AVENUE; LORA MARTINSON, APPLICANT, GIGI NORTH LLC, OWNER**

The Village Board for the Village of Caledonia resolves as follows:

WHEREAS, Gigi North LLC, Owner, Lora Martinson, Applicant requested approval of a sign plan presented in **Exhibit A** at 4542 Douglas Avenue; Parcel I.D. No. 104-04-23-29-168-000; and

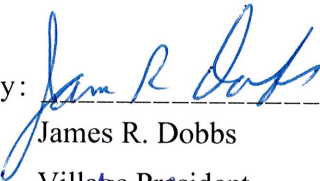
WHEREAS, the Village Plan Commission has recommended approval of the sign plan for the following reason:

1. The proposed sign amount and sizes are permissible through the sign plan review process.

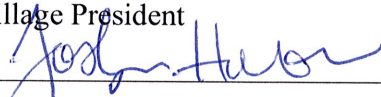
NOW, THEREFORE, BE IT RESOLVED, by the Village Board of the Village of Caledonia that the sign plan as presented in **Exhibit A**, is hereby approved for the same reasons and requirements set forth above and subject to the same conditions imposed by the Village Plan Commission.

Adopted by the Village Board of the Village of Caledonia this 2nd day of August, 2021.

VILLAGE OF CALEDONIA

By: 

James R. Dobbs
Village President

Attest: 

Joslyn Hoeffert
Village Clerk

EXHIBIT A

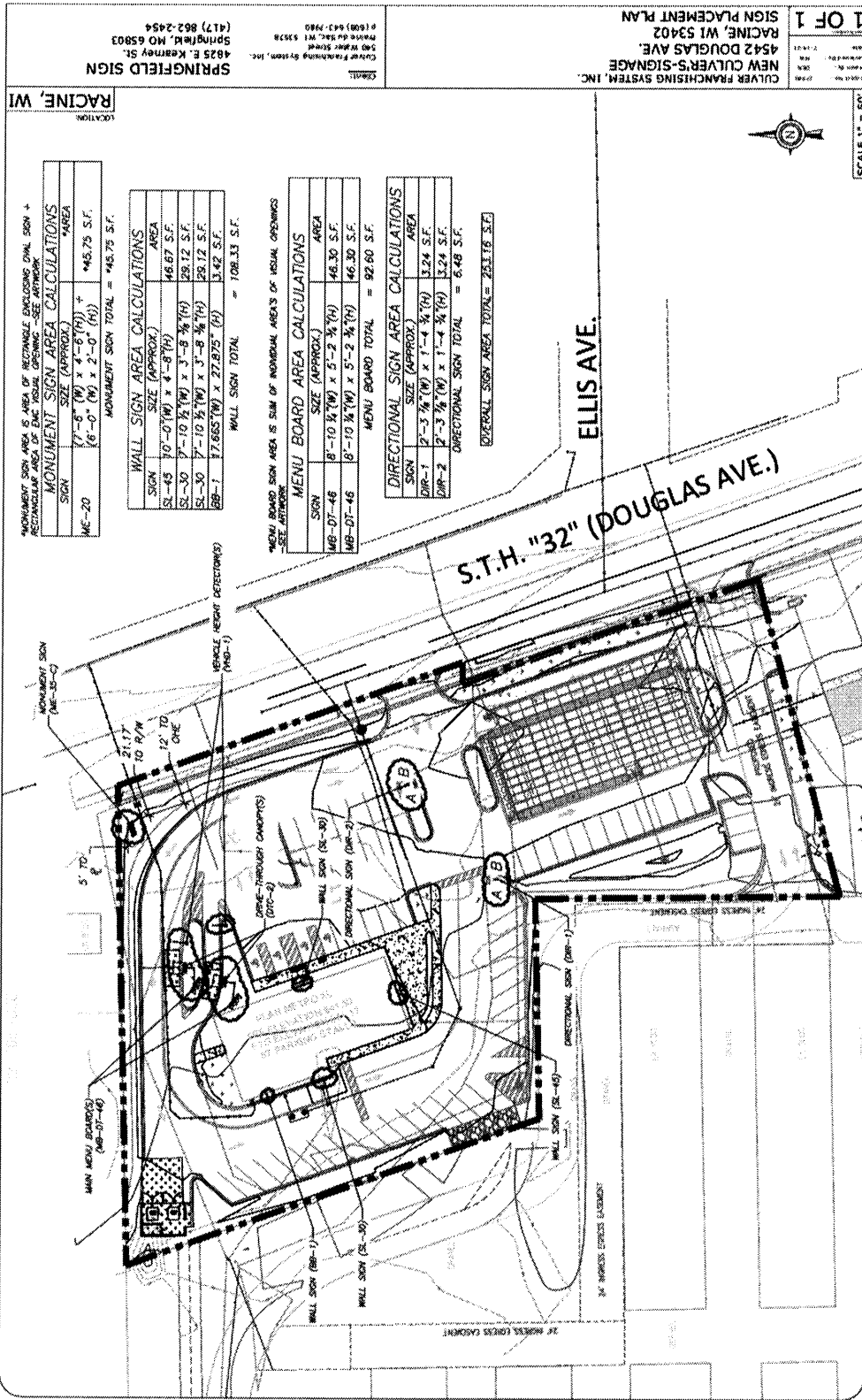


EXHIBIT A

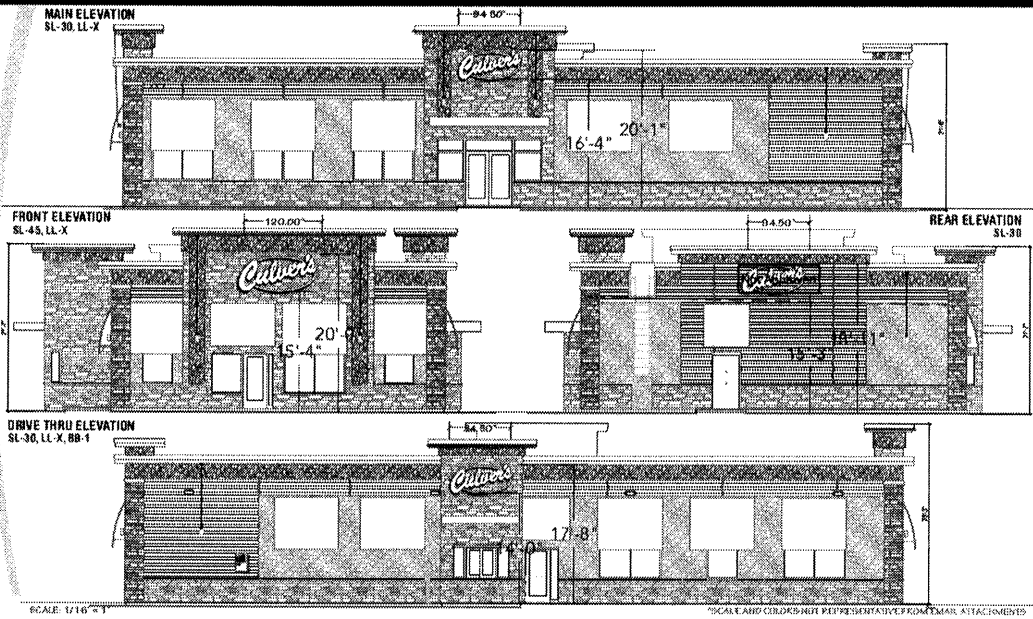
ELEVATION WALL SIGNS

RACINE, WI

SL-45 & SL-30 Illuminated White Script Channel Letters

SL-SERIES

- Channel letter construction
- One piece (saddle capped sections)
- LED Internal Illumination
- Typical application for new construction
- Embedded power supplies
- UL marked product
- No install pattern needed, level line scribed in back of sign



SCALE: 1/16" = 1' ALL DIMENSIONS AND COLORS NOT REPRESENTATIVE FROM EMAIL ATTACHMENTS. ALL MEASUREMENTS ARE APPROXIMATE.

ME-35C MONUMENT WITH EMC

RACINE, WI

ME-35-L-26X108-16-RGB-PRC

ME-35C

37' Signcraft Monument Sign (W, W, W)

SIGN DETAILS:

- Panel 1 sign cabinet of enclosure constructed with aluminum.
- Backlighting LED's.
- Thick polycarbonate lens, mounted 1/8" in front of sign.
- Signcraft 30000 RGB LED panel.
- Panel 2 sign cabinet of enclosure constructed with aluminum.
- Backlighting LED's.
- Thick polycarbonate lens, mounted 1/8" in front of sign.
- Signcraft 30000 RGB LED panel.
- Panel 3 sign cabinet of enclosure constructed with aluminum.
- Backlighting LED's.
- Thick polycarbonate lens, mounted 1/8" in front of sign.
- Signcraft 30000 RGB LED panel.

EMC COMPLIANT - KNOW RESTRICTIONS

CONDUCTIVE: PLATE: GND: WIRE: X
 ANTENNA: X
 COMPONENT: X

YOUR TIME OF SERVICE: 5.2hr
 EXPIRATION DATE: 26 APR 2019
 MAXIMUM BANDWIDTH: 8000000000
 SUPPORTING BANDWIDTH:

STAIN CODES

Monument - 30000 RGB LED panel
 Panel 2 - 30000 RGB LED panel

NOTES

UNIVERSITY OF WISCONSIN - 48 101 W
 16 75' x 20' x 12 100' 10000000000

FILES PROVIDED: EMC COMPLIANT, MEASUREMENTS, 3D MODEL
FILE CREATED BY: PROSIGN SYSTEMS
FILE DATE: 10/10/2018
FILE TIME: 10:10:10 AM
FILE PATH: C:\Users\j\Documents\ME-35C

BB-1 BUTTERBURGER PANEL

RACINE, WI

ButterBurger Outdoor Panel Wall Sign

BB-1

All dimensions listed with panel mounted in place.

Panel up maximum with mounting system.

Do not use epoxy with mounting system.

Mounting hardware to be 1/2" x 1/4" x 1/8".

Sign to be installed at 16' height from ground level.

TYPICAL INSTALLATION - FOR NEW WALL

1. PREPARE WALL

2. PREPARE PANEL

3. PREPARE SIGN

4. PREPARE MOUNTING SYSTEM

5. PREPARE MOUNTING SYSTEM

6. PREPARE MOUNTING SYSTEM

7. PREPARE MOUNTING SYSTEM

8. PREPARE MOUNTING SYSTEM

9. PREPARE MOUNTING SYSTEM

10. PREPARE MOUNTING SYSTEM

NOTES

1. PREPARE WALL

2. PREPARE PANEL

3. PREPARE SIGN

4. PREPARE MOUNTING SYSTEM

5. PREPARE MOUNTING SYSTEM

6. PREPARE MOUNTING SYSTEM

7. PREPARE MOUNTING SYSTEM

8. PREPARE MOUNTING SYSTEM

9. PREPARE MOUNTING SYSTEM

10. PREPARE MOUNTING SYSTEM

EXHIBIT A

MB-DT-46 EXTERIOR MENU BOARD

RACINE, WI

Blue Outdoor Drive-Thru Menu Board

MB-DT-46

Standard Menu Board for Drive-Thru Lane

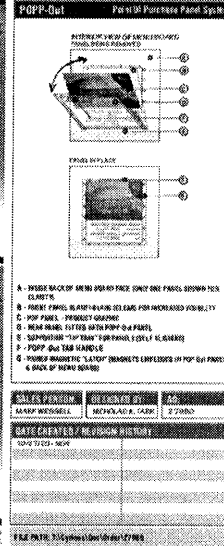
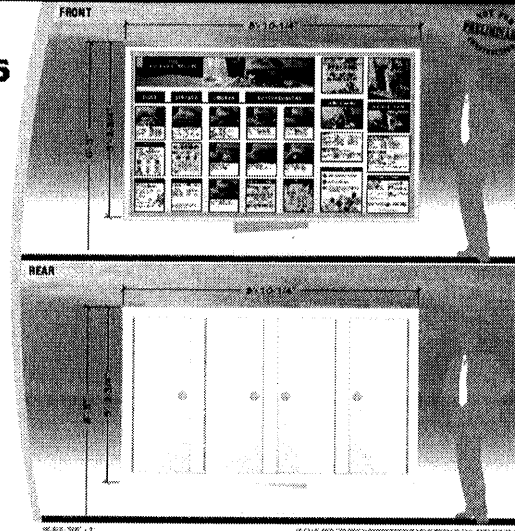
LED Internal Illumination

POP Graphics (panels must be purchased separately)

POP-Out Adapter access panels included for easy in & out of POP panels

1-1/2" option for 160 mph coastal wind standards available

Loading door access door (4)



Culver's

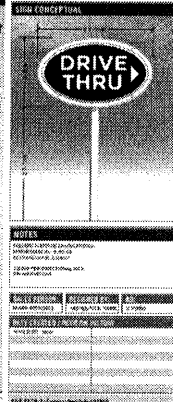
DIR DIRECTIONAL SIGNS

RACINE, WI

Illuminated Directional Signs

DIR

24 aluminum cases for LED internal illumination. Drives and directional signs. Polycarbonate back protective cover. Feet mounted to interior. Dimensions shown are for 8' high signboard. 10' standard product.



Culver's

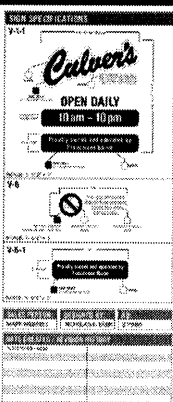
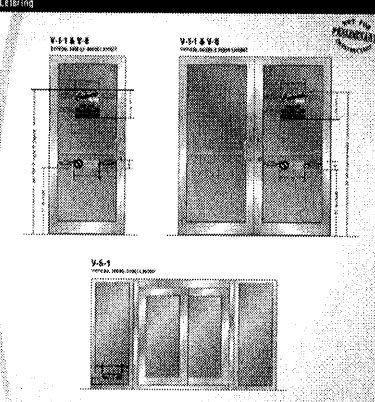
V-1, V-5, V-6 DOOR & WINDOW VINYL

RACINE, WI

Entry Door & Drive-Thru Vinyl Lettering

V-1-1 V-5-1 V-6

3/4" HP color vinyl substrate. UV stability printed using UV inks. Back glass screen - 1/8" thick. Corrosion cell. Mount hardware as specified. VINYL-1: 1/8" thick, 1/2" wide, 1/2" high. VINYL-5: 1/8" thick, 1/2" wide, 1/2" high. VINYL-6: 1/8" thick, 1/2" wide, 1/2" high.



Culver's